

Dated Journal

Netherlands Philately  
1308 Pin Oak Drive  
Dickinson, TX 77539-3400  
USA

# Netherlands Philately

*Magazine of the American Society for Netherlands Philately*

**Volume 36/3**

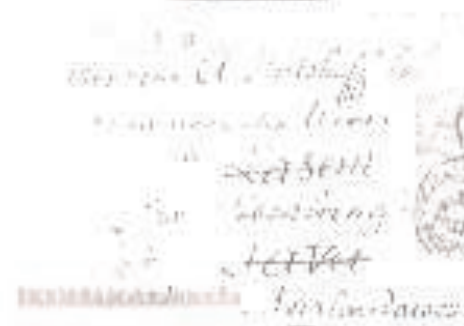


**American Society for Netherlands Philately**  
Founded in 1975





# De Nederlandsche Postzegelveiling



bij ons heeft u 2 mogelijkheden:  
**Contante Betaling**  
of realisatie via onze  
**Internationale Veilingen**

1 maand voor de veiling  
CATALOGUS OP INTERNET

**www.npv.nl**

MET ALLE FOTO'S IN KLEUR

bel ons voor een vertrouwelijk  
en gratis advies  
tel. 0294 - 43 30 20  
e-mail [info@npv.nl](mailto:info@npv.nl)

**De Nederlandsche Postzegelveiling**  
Leeuvenveldseweg 14, 1382 LX Weesp  
gediplomeerd veilinghouder en taxateur



**eCosta**



COIN AND STAMP AUCTION

365 dagen per jaar veiling  
van munten en papiergeld

StampAuction | CoinAuction | Postzegelveiling | Muntveiling

**www.e-costa.com**

Munten Postzegels Collectables | [www.ecosta.com](http://www.ecosta.com) | Stamps Coins Collectables

# NETHERLANDS PHILATELY

Magazine of the American Society for  
Netherlands Philately; **Volume 36/3**

April 2012

Editor's message

G'day dear members,

In front of you is the latest issue of our magazine. In this issue you will find some new interesting articles and a update of the postal fraude article from the previous issue. This season we have lost another well-known member; Max Lerk. Max was our advertising manager and Dutch representative of our society. His positions are vacant now. If any member(s) is interesting to help the society out please contact our president Ed.

Life in Australia is progressing for me. Just before Easter I managed to get a job and now I'm in training for it. Also I received the good news that my personal items have arrived in Adelaide and will soon be delivered by the moving company. I'm looking forward to this as I really miss my philatelic literature.

For our members who wish to write an article, or even better articles, please don't hesitate and write your philatelic story. It doesn't matter if it is story regarding postal routes, postal rates, varieties you discovered in a stamp, or if you want to tell the our members more about fiscal philately. I'll be happy to place it in our magazine. Also, it really doesn't matter if the article is one page or multiple pages!

## Table of Contents

Editor's Page	73
The board and messages of the board	74
Postal Fraude in the Netherlands, Update.	75
Native Runner Covers	76
PCGD Kwitanties and the Z-cancel	79
Some hanky-panky with a Saba cancel	82
Magazine & Book Reviews	85
Recent issues	89

**Website:** [www.asnp1975.com](http://www.asnp1975.com)

ASNP is founded in 1975 by  
Paul van Reyen

**Netherlands Philately** is  
published 6x per year by  
the American Society for  
Netherlands Philately

©Copyright 2011, the American Society  
for Netherlands Philately (opinions ex-  
pressed in the various articles in the Maga-  
zine are those of the authors and not neces-  
sarily endorsed by ASNP or this Magazine)

ASNP is affiliate No. 60 of  
APS Adverting rates per  
issue are:  
\$50 for a full page,  
\$30 half page and  
\$20 for a quarter page.

# **The Board & Messages of the board**

## **President**

Ed Matthews  
406 Yale Crescent  
Oakville, Ontario  
Canada L6L 3L5  
yehudamatt@sympatico.ca

## **Vice President**

Dries Jansma  
111 Poplar Loop  
Flat Rock, NC 28731-9793  
dries@bellsouth.net

## **Treasurer**

Tom Harden  
3015 Harmony Lane #104  
Muscatine, IA 52761  
tlharden@machlink.com

## **Secretary**

Jan Enthoven  
221 Coachlite Ct. S.  
Onalaska, WI 54650  
jenthoven@centurytel.net

## **Auction Manager**

Hans Moesbergen  
12739 W. Wilshire Drive  
Avondale, AZ 85392-6563  
hans@moesbergen.net

## **Advertising Manager**

### **Vacancy**

## **Librarian**

Paul Swierstra  
199 Chestnut Street  
San Carlos, CA 94070-2112  
paulhoxwier@yahoo.com

## **Board of Governors**

Jan Enthoven  
Onalaska, WI

John Hornbeck  
Washington D.C.

Benjamin Bump  
Hampden, MA

## **Magazine Editor**

Alex Nuijten  
P.O. Box 128  
Collinswood  
South Australia 5081  
Australia

asnpmagazine@gmail.com

## **Magazine Editorial Committee**

Tony Schrier  
tonasnp@aol.com

## **Magazine Publisher**

Ben H. Jansen  
bjansen@uh.edu

## **British Representative**

Richard Wheatley

## **Dutch Representative**

### **Vacancy**

## **German Representative**

Dr. A Louis

## **Magazine Notes**

Our Magazine is the business card of our society. With modern technology available, a full color magazine is warranted.

Potential authors are asked to send in full color scans (at 600 dpi) of their illustrations. I would like to receive the text in MS Word. Keep in mind that you clearly state where each illustration belongs in the article.

Contact the Magazine editor in case of questions.



## In Memoriam Max Lerk

Another member has closed his album for good; Max Lerk passed away on March 9, 2012, after a short but violent illness, he was 80 years old.

He was a member of the ASNP as well as of the NPofC in California. Max was the author of quite a few philatelic articles in the U.S. as well as in the Netherlands, and was our Advertising Manager in the Netherlands.

Max was also a very talented poet and the maker of many etchings of scenes around Maarn, this in addition to his volunteer work with his wife Corry for the UNICEF.

I met Max and Corry during our ASNP trip to Holland in 2002, especially on the boat trip on the IJsselmeer, and I remember well his sunny outlook on life.

We'll miss him and extend our condolences to Corry and the children.

Ed Matthews



## Postal Fraud in the Netherlands, Update.

*by Alex Nuijten*

In the previous edition I wrote a article about the postal fraud in the Netherlands. Since that article I searched for more information and managed to add some more stamps to the list of forged stamps.

On the image on the right you can see the 3 and 4 guilder stamps. These too were forged. These stamps are printed as a peel and stick stamp while the originals are from gummed sheets.



With these two last additions the list of forged stamps looks as follow:

**Queen Juliana 1969 issue:** 5 guilder (NVPH 957) and 10 guilder (NVPH 958).

**Queen Beatrix 1981 issue:** 1,50 guilder (NVPH 1244A), 2 guilder (NVPH 1245A), 2,50 guilder (NVPH 1246A), 3 guilder (NVPH 1247), 4 guilder (NVPH 1248), 6,50 guilder (NVPH 1250A) and the 7 guilder (NVPH 1251A).

**Queen Beatrix 2002 issue:** € 1 (NVPH 2042) and the € 3 (NVPH 2043).

**Business stamp 2007 issue:** € 0,44 (NVPH 2487).

# Native Runner Covers

*by Richard Wheatley*

## Background

Back in the 1970's I organised three trips from where I lived in the north of England to international philatelic exhibitions in mainland Europe. These trips were taken in the company of two of my stamp collecting friends. Each of the holidays was memorable, not only for the fine comradeship and stunning exhibits, but also for some additional reasons.

In 1976 at Hafnia, Copenhagen, I well remember seeing an exhibit of Dutch East Indies by Hal Zalstein. There he displayed five frames of pre-stamp covers. This exhibit truly caught my eye - for this was what postal history was all about and it inspired me to start collecting that aspect. One item in particular I remember to this day, it was a native runner cover with two chicken feathers attached to it - one white, the other black.

The following year our European destination was Holland and the Amphilex exhibition. Our hotel turned out to be in the red light district of Amsterdam, where we saw a different sort of exhibition!

Our third trip, in 1978, found us in Prague at the Praga exhibition held in the magnificent Brussels Pavilion in Julius Fucik Park. When at the exhibition at mid-day we would buy our lunch at one of the small stalls just outside the hall. There we had horky parek (hot dog), but we had to be quick eating, otherwise the wasps would have it! However, of even more lasting memory, is that I met there my then future wife. She had travelled there with some friends from the south of England and she was exhibiting part of her Czech stamp collection.

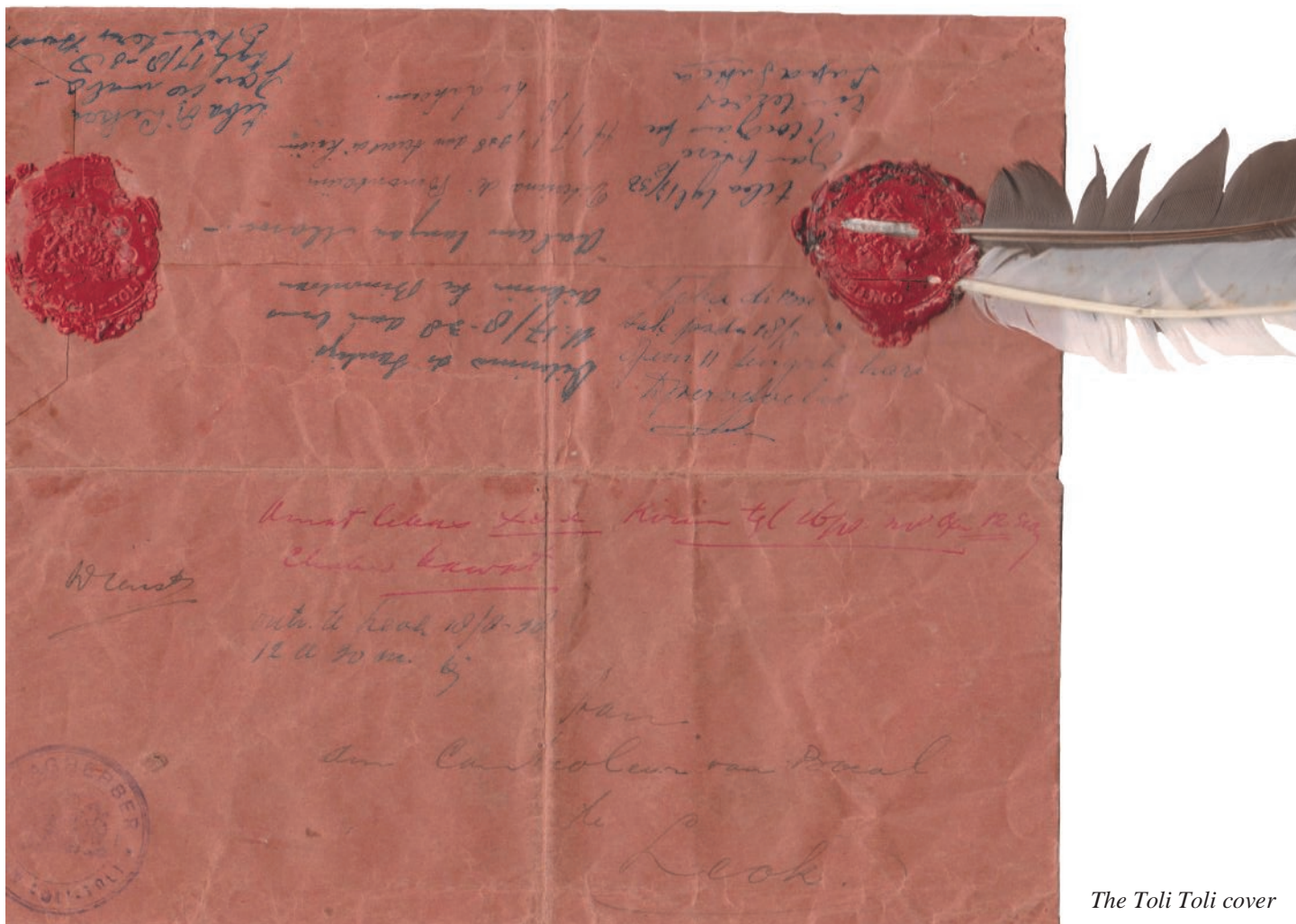
About a year ago there was a tiny advertisement in this journal from a person wishing to dispose of Dutch colonies material. That person was Maxime Zalstein, the daughter of Hal. Amongst the items on offer was the native runner cover, last seen by me 36 years before in Copenhagen! That cover, and quite a bit more material, have found their way across the Atlantic and now form an important part of my collection.

## Native Runner Covers

This service is also known as Post Terbang, which translates as "flying post, and Veenpost, meaning "feather mail". All known examples have been used on Government Service (Dienst) in remote parts of the country. Peter Bulterman in his book (Ref. 1) states that the service was known on Borneo, Celebes and Sumatra over the period 1908 to 1937. This article will expand not only the geographical area but the timescale as well. The earliest record that I have found on this subject comes from the book by J. Beer van Dingstee (Ref. 2).

He describes how the Post Terbang (old fashioned airmail he called it) postal service operated in the Outer Possessions around 1830 like this:

*"The delivery between adjacent districts was run on very primitive lines by the Post Terbang, literally the "flying post", which was an unusual and speedy way of carrying express letters. These letters had a chicken feather attached to them by sealing wax, and were carried from one village to another by runners. If the letter had only to be carried by day, just a white feather was attached, but if it was to be carried also by night, then a black feather was added. As a means of checking, the hour and date of despatch was written on the letters."*



The Toli Toli cover

## Survey of Recorded Native Runner Covers

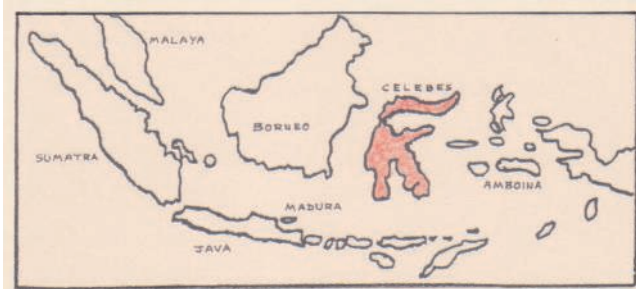
- 1908 Bandjermasin (Borneo) to Batavia (Java). Ref. 1
- 1936 Amahi, Ceram Island (South Moluccas) to Bay of Teluti (Ceram Island). Ref. 3
- 1938 Toli Toli (Celebes) to Leok (Celebes). Ref. 4
- ? Sorong (Dutch New Guinea) to Mega (DNG). Ref. 5
- ? Palembang (Sumatra) to Lahat (Sumatra). Ref. 6

## The Toli Toli cover

This letter, which at some time in the past was opened out for display, has six endorsements by village chiefs as it made its way around the remote north-west corner of Celebes. The villages en route are marked on the map. It was despatched from Toli Toli at noon on 16 August 1938:

Toli Toli to Santigi 40km 17/8  
 Santigi to Lakoang 40km 17/8  
 Lakoang to Boesak 20km 18/8 11am \*  
 Boesak to Leok 30km 18/8 12.30pm



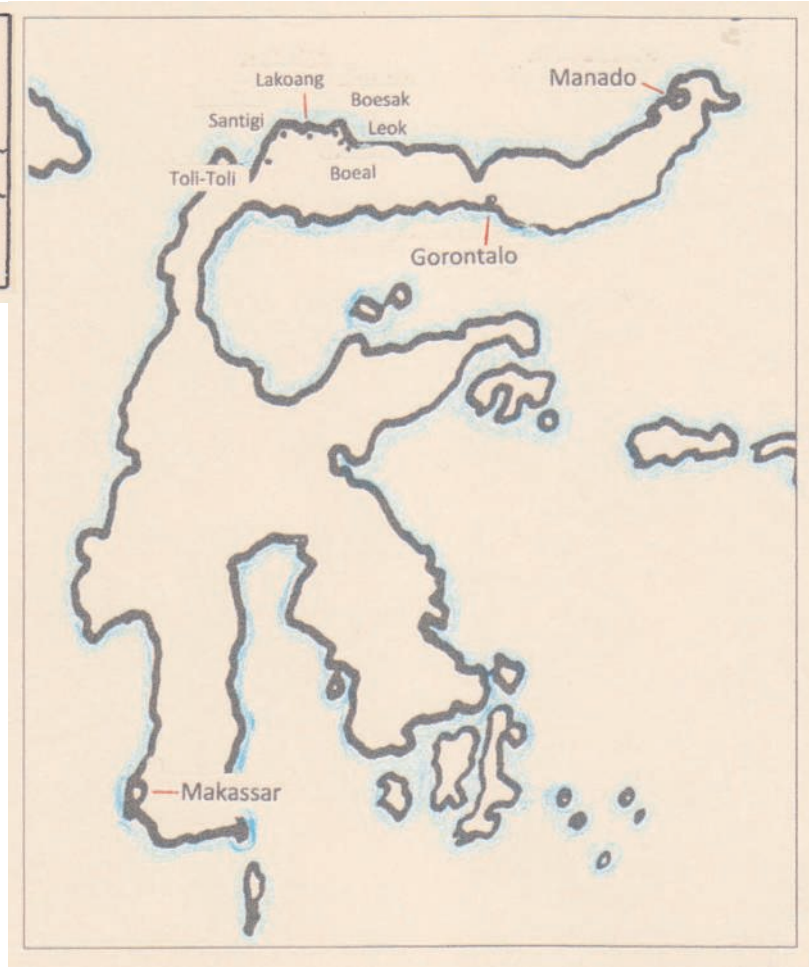


Map of the Dutch East Indies and a map of the Celebes

\* The chief at Boesak has written on the cover received at 11am by pada; pada = foot!

A total of 130 km, about 80 miles, in two days over rough jungle tracks is pretty good going.

It is addressed to the Controller of Boel at Leok. The large red wax seal has the Dutch coat of arms in the centre and impressed around the circumference is: **CONTROLLER van TOLI TOLI**. The large violet double circle cachet reads: **GEZAGHEBBER van TOLI TOLI**, *gezaghebber* means "administrator" and again in the centre there is the Dutch coat of arms.



## Post card from Toli Toli

Even today the area is remote. A post office was established at Toli Toli on 1 November 1919 and a branch post office was opened at Leok in 1933. A hundred years or so ago there was a flurry of prospecting for gold at Boel, where a branch post office was opened 1 May 1911, no doubt to serve the postal needs of the prospectors.

Items to pass through the post office at Toli Toli are equally hard to find, but one is illustrated here. This postal stationery card (G.44) was posted on 22 December 1930 to Makassar where it was received three days later on the 25th! The message sends New Year greetings to the European manager of the Singer Sewing Machine Company.



Postcard from Toli Toli

## Conclusions

To the list of areas that these covers are known from, we can now add the Moluccas and Dutch New Guinea. The years recorded now extend to 1938.

## References

- 1 Bulterman PR, *Poststempels Nederlands-Indie 1864-1950*, p. 179-181
- 2 Beer van Dingstee J, *Development of the Post in Netherlands East Indies*, 1934 (translation into English)
- 3 Hardjasudarma J, article in *American Philatelist*, Feb. 1997 p. 151
- 4 Collection Richard Wheatley
- 5 Joyce, Rev AH, article in *Papuan Philatelic Society Stamp News*, c. 1975
- 6 Collection John W Jackson



# PCGD Kwitanties (Proof of Payment thru the Dutch Postcheque- and Girodienst) and the Z-cancel

*by Hans Kremer*

Since 1870 it had been possible to have bills collected through the services of the P.T.T. Then, in 1918 the Postcheque- en Girodienst (PCGD) was established. Through the use of machine cancels people were encouraged to open a giroaccount (fig. 1) The PTT in 1968 issued a stamp commemorating the PCGD's 50th anniversary (fig. 2) .

The PCGD's was a national system, i.e. available thru many PCGD branches, which were usually part of postoffices (even the smallest ones).

Per November 1 1926 the PCGD introduced the so-called girokwitantie. For our purposes I would define kwitantie as 'proof of payment', and in particular referring to cash payments.

Kwitanties (which could not exceed fl 1000) paid through the services of the P.T.T.had been around a long time, but the opportunity to have cash, collected by the mailman, directly deposited into a girokwitantie account (checking account) was something new. It had always been cumbersome to transfer money from one person to another, but with giro accounts this was no longer the case.

Girokwitanties were legal proofs of payment once a mandatory tax (in most cases fulfilled by attaching a fiscal stamp) was paid to the government.

These girokwitantie forms (known as form P 263 bis, see fig.3) were available for 1 cent a piece. The postoffices also charged a fee for this collecting service itself and, as all postal fees, these fees too increased over time. In 1959, the time of the girokwitantie shown here, the fee was 45 cent, to be paid the same way one paid for a letter, i.e., by attaching a stamp.

PTT Collecting fee for girokwitanties

11-01-1926 15 cent

11-01-1946 20 cent

07-01-1953 30 cent

04-01-1957 45 cent

01-01-1964 70 cent

06-01-1965 80 cent

02-01-1969 Girokwitantie replaced by 'postincassokaart'

The complete form was filled out (in this case in Tilburg on June 25, 1959) by the company delivering the product and handed over (June 26, 1959, Tilburg) to the PTT. The mailman then (June 27 in Roosendaal) presented this form to the person/firm who had received the product and they were asked to pay (in cash) the amount due to the mailman.



*Fig.1 PCGD advertising used in 1919 and 1920*



*Fig. 2 1968 - 50th Anniversary of PCGD*

If the cash owed was not paid right then, the payer had usually eight days (called *zichtdagen* ('payment due days')) to bring the money to the postoffice. We'll see that 14 days was also an option and I have seen three-day girokwitanties as well (fig. 4). It was most likely up to the creditor to set the number of days, although eight days appears to have been the standard. When the number of 'zichtdagen' was extended from 8 to 14 days a 'Z-cancel' was applied to the kwitantie.

What happened to the various parts of the girokwitantie? There are four parts to the form (refer to fig.3), three across the top half and one half for the bottom part.

POSTCHEQUE- EN GIRODIENST BIJ  
 Postrekening nr 70152  
 VAN DEN BOOM & CO.  
 Breukelen 10 te wijk 1166 VNH  
 Bovenstraat 44 - TEL 2481  
 Kernligesing van bijschrijving van  
 482 Gld 14 Ct  
 Ingevoerd bij  
 F. H. Rogers  
 volledig adres Markt 62  
 te Roosendaal  
 Duidelijke van ingetochte  
 26 JUN '59 70  
 Gld 482 14 Ct  
 wegens een ingevorderde kwitantie  
 Staat G 9  
 Nr  
 De besteller komt nu terug om dit bedrag bij u te ontvangen  
 Volgnummer van de kwitantie Nr 2 Aantal zichtdagen 8 dagen  
 ONTVANGEN van F. H. Rogers str. Markt 62 te Roosendaal  
 vierhonderd twee en tachtig Gld voor tien Ct  
 wegens Post.no. 12705/13025/13438  
 Tilburg de 25 juni 1959  
 ZEGGE 482 Gld 14 Ct  
 De invulling moet met inke geschieden. Veranderingen maken het formulier ongeldig. Voor de afdeling van de schuldenaar op de kennisgeving van bijschrijving wegens storing kan elke gewenste vorm worden gekozen. Het dik omlijnde gedeelte niet invullen. De kwitanties zijn onderworpen aan de bepalingen van de Zegelwet 1917. Model P 293 bis

Fig. 3 Complete Form 'P 293 bis' filled out, 45 cent PTT fee, 15 cent revenue (fiscal) fee

Duidelijke van aankomst Volgnummer van het bordereel Plaats voor de frankeregel  
 Nr  
 45C NEDERLAND 25C NEDERLAND 219  
 Volgnummer van de kwitantie Nr Aantal zichtdagen 3  
 ONTVANGEN van N.V. Parf. Groothandel Nigella, str. Slotermeg 320 te Badhoevedorp  
 zeventig Gld zeventig Ct  
 wegens geleverde goederen volgens Nota d.d. 15-10-63 nr. 10034 Rotterdam, de 25 februari 1964  
 ZEGGE 70 Gld 70 Ct  
 De invulling moet met inke geschieden. Veranderingen maken het formulier ongeldig. Voor de afdeling van de schuldenaar op de kennisgeving van bijschrijving wegens storing kan elke gewenste vorm worden gekozen. Het dik omlijnde gedeelte niet invullen. De kwitanties zijn onderworpen aan de bepalingen van de Zegelwet 1917. Model P 263 bis

Fig. 4 Kwantantie with three 'payment due' days

The top right part stayed with the buyer, the two top left parts went to the PCGD first, but ultimately the left top part ended up with the seller (as proof that the money was deposited), while the bottom part remained with buyer as proof of payment. It is this bottom part one usually sees in collections.



If no money was collected, the complete form would have to be returned to the person/company issuing the kwitantie. This might have been the case here, although a fiscal stamp was attached as proof of payment. However, this 15 cent\* fiscal stamp, as well as the regular 45 cent stamp were attached already by the seller when the form was filled out (most likely on June 25), prior to being delivered to the postoffice the next day, and the two days before it was handed to the buyer. The buyer was usually charged with these fees, as can be seen in fig 3, where, at the top right it mentions 'inc, kosten 0,60', which meant 'collecting fees of 60 cent' (45 cent stamp plus the 15 cent fiscal stamp).

Fig. 5 Kwitantie of Sept. 1963; "Aantal zichtdagen 14"; Z-cancel applied

We must assume that no payment was made in this case, or payment was made another way and the complete form was returned to the seller

Now let's have a look at bottom part of another girokwitantie (fig. 5), this one sent on September 10 1963 (date can be seen on the canceled fiscal stamp). It has 14 'zichtdagen'; thus the Z-cancel was applied.

The Z-cancel (figs. 6, 7) can be found in various colors, with red and black being the most common ones. For practical purposes whichever color inkpad was available was occasionally used.



Fig. 6 Z-cancel

The Z-cancels have also been seen on 'Christmas/New Year's mail' when, due to the high volume of mail, any cancel at hand would occasionally be used.



Fig. 7 "Z" hand cancel

The rectangular AMSTERDAM/10 SEP 63 \* 125 cancel (fig. 5) was a P.T.T cancel, used by the 'kwitantie offices'. The number "125" refers to a sequential kwitantie number, starting with number 1 every month.

- The fiscal rate was 5 cent until Aug. 1, 1918, 10 cent until 1-1-1951, and 15 cent from then on.

#### Refs:

Handboek Postwaarden Nederland, Pages TAR B-59, 60, C-33, Johan Enschedé, ongoing publication  
P.T.T. Postgids Binnen- en Buitenland, Jan. 1947, 's Gravenhage  
Dio Glaudemans, Personnel contact  
<http://nl.wikipedia.org/wiki/Postcheque- en Girodienst>  
Various Dutch papers on [www.kranten.kb.nl](http://www.kranten.kb.nl)

# Some hanky-panky with a Saba Cancel

by Richard Phelps

An interesting thing that apparently happened in Saba was an unofficial transfer of cancelers in the early 1920s. It appears that an unofficial post office was set up in Windwardside with the cooperation of the clerks from the official post office which was at The Bottom.

When the Cross type cancels came out in the early 1920's they were issued to the post office at The Bottom.

Frank Julsen\* suspected that some hanky-panky went on which made an unofficial post office available to the residents of Windwardside instead of having to go to The Bottom to do their postal business. Of course SABA being so small made that a rather short distance (a couple of miles) but obviously many people didn't want to have to go there. So it seems that they set up an unofficial post office in Windwardside (Wd-Side) which used discarded postmarkers from The Bottom and probably delivered batches of mail to The Bottom for official entry into the mail stream.



Cancels used in Saba from 1907 thru 1947:



*Large Double-Circle  
1907 -1921*



*Type A ( Three  
crosses)  
1922-1926, 1929*



*Type F (Five  
crosses)  
1927-1947*

I believe that I have pretty much proved that Frank was right about his assumption. I have several covers with the Large Double-Circle cancel, originally issued to The Bottom, which were then used for several years after the Cross type was issued to The Bottom. These include covers that have stamps on them that were not printed until the mid-1920's. These covers all have return addresses (if they have one) from Windwardside.





Large Double-Circle probably used at Wd-side, year unreadable, postage due at Grand Rapids Michigan, return address of Wd-side (the Every family) and Curacao Cross type transit mark dated 9 - 12 - 26

When the Cross type was first issued to The Bottom it was the type A. Later on the heavily-used type F came out and the type A cancels sort of disappeared from general use.

I am now thinking that it is just possible that the type A handstamp was also sent to the Windwardside unofficial office and used there for quite a while, perhaps until Windwardside got its own post office when the coded steel cancels came out in 1947.



Saba Cross Type A handstamp possibly used at Wd-Side in 1932



Saba Type A 1932, detail

I am continuing to hunt for examples to support this idea. Do you have any SABA covers with Cross type A cancels which have Windwardside return addresses, mailed after the type F (with 5 crosses) came out in The Bottom in 1927?

Please contact me at [zegelman.email@verizon.net](mailto:zegelman.email@verizon.net)

Ref:

\* Frank Julsen and A.M. Benders, A Postal History of Curaçao and the other Netherlands Antilles, van Dieten, The Hague, 1976





VOORHEEN  
POSTZEGELVEILING  
WIGGERS DE VRIES BV

# CORINPHILA

- \* VEILINGEN IN NEDERLAND SINDS 1974  
EN IN ZWITSERLAND SINDS 1926
- \* GEVARIEERD AANBOD VAN BETERE ZEGELS,  
POSTSTUKKEN, COLLECTIES EN ENGROSPOSTEN
- \* TEVENS PRENTBRIEFKAARTEN, MUNTEN  
EN PAPIERGELD
- \* HÉT ADRES VOOR INTERNATIONALE VERKOOP



CORINPHILA  
VEILINGEN BV  
HEEMRAADSLAAN 100  
1181 VC AMSTELVEEN  
NEDERLAND

TEL. +31 - (0)20 - 624 97 40

FAX +31 - (0)20 - 624 97 49

INFO@CORINPHILA.NL

WWW.CORINPHILA.NL

G.J. GARRITSEN REGISTERTAXATEUR FEDERATIE TMV

VEILINGCATALOGI DIGITAAL VIA ONZE WEBSITE,  
OP AANVRAAG PER POST VERKRIJGBAAR

WILT U OOK INZENDEN VOOR EEN VAN ONZE  
VOLGENDE VEILINGEN ?

GAARNE GEVEN WIJ U VRIJBLIJVEND ADVIES EN  
INFORMATIE OVER ONZE VERKOOPVOORWAARDEN



## Magazine & Book Reviews

*Note: In general only those articles with philatelic subjects related to the Netherlands and its (former) Overseas Areas are discussed here; many other articles of interest appear in these publications. Only those publications with new information are discussed.*

*Digital scans can be made available to anyone interested in a particular article.*

*Contact your magazine editor for this service, see the e-mail adress under The Board.*

### Magazine Reviews

#### Maandblad Filatelie

*Language: Dutch.*

Maandblad Filatelie- Brouwer Media-, P.O.Box 20, 1900 AA Uitgeest, The Netherlands.

Supscription € 27,= /yr., € 47,05 for foreign countries, free to members of Dutch philatelic societies, who are member of the KNBF.

**Website:** <http://www.defilatelie.nl/>

#### March 2012

Most articles in this issue are dedicated to postal stationery since the March issue is the postal stationery special. A lot of interesting articles about the Dutch postcards can be found in this issue. Max Plantinga kicks off with a article about the Postcards without value indication. His article gives a good overview what you can collect from the first postcards.

Jan Boon writes about the “Tweet” of the 19th century. The postcard! It’s a easy to read article about the first postcards of the Netherlands. Just as twitter on the internet these days, so was the postcard in the 19th century the modern way of sending a short message.

Han T. Siem from the USA takes a whole different prospective with postal stationery. He writes in his article about the registered postal stationery

envelopes send from the United Kingdom and British Commonwealth to the Dutch East Indies.

Adam van der Linden writes about the Dutch postcards that where returned to sender during the period of the German occupation in World War II.

Otto Koene writes in his article about the first machine postmarks on the early issued postcards of the Netherlands. It is a addition, with new findings, to his previous published article in the magazine.

Rien de Jong writes about a much lesser known type of postcards that was used in the Netherlands; the railway postcards, and he discusses their usage in Rotterdam.

Jaques Spijkerman closes the article series (for our collecting area) with a article about the Dutch Money Orders and related postal stationery that was used to send valuable items.

#### April 2012

Compared to the March issue the April issue has only two articles that cover our area of interest. Frans Hermse writes in his article about the latest changes PostNL is going to make to its delivery structure. Mr. H van der Vlist continues his series of forgeries. This time he writes how you can detect most types of forgeries of the “Armenwet” overprints.



Afb. 26 - zogenoemde dubbeldruk opdruk

## Netherlands Philatelists of California

*Language: English.*

Membership dues are US \$ 12,= for corresponding USA and Canada based members; US \$ 17,= for regular members attending the monthly meetings, and US \$ 18,= for international corresponding members. Secretary/Editor: Frank Ennik, 3168 Tice Creek Dr. # 3, Walnut Creek, Ca 94595-3772

E-mail: Ennik123@att.net

**Website:** <http://www.angelfire.com/ca2/npofc/>

### March 2012

In this issue Hans Kremer writes about the fourth (Airmail) test flight to the DEI in 1928. His article covers the route the plane took and what eventual happed with the plane when it crashed at take off.

## De Aero Philatelist

*Language: Dutch.*

The Aero Philatelist is issued four times a year by “De Vliegende Hollander”. Secretary: W. van der Helm, De Kolk 13, 3931 WN Woudenberg, The Netherlands. E-mail: w.vanderhelm@veteranen.nl Supscription is € 27,50 for foreign countries. Many issues of the “De Aero Philatelist” includes a substantial auction section of interesting airmail covers and/or related items.

**Website:** <http://www.de-vliegende-hollander.com/>

### Number 1-2012

This issue of the Aero Philatelist contains an interesting article about the SCVT envelopes. Many of you might have heard of the 1934 air race from London to Australia. The TBC foundation had the idea to produce 2500 special covers to raise money for their fight against TBC.



*Netherlands Philately, Vol. 36, No. 3*

There are a few different used envelopes to be found. Some of these are franked with stamps from Australia since they where send back straight back to the Netherlands. Others have stamps of the DEI as the plane left Australia to go to our colony. Also a range of different postmarks are possible. The article shows all these different covers and used postmarks.

## Po & Po

*Language: Dutch.*

The Verenigingsnieuws (Newsletter) is published quarterly by the Nederlandse Vereniging van Poststukken en Poststempelverzamelaars (Po&Po). Membership is € 40,= /yr., which includes the delivery of the Newsletter and the more irregular magazine Postzak. Secretary: E.W. Flentge, Oude Hoflaan 11, 9751 BK Haren, The Netherlands; e-mail: secretariaat@po-en-po.com **Website:** <http://www.po-en-po.nl/>

The magazine “Verenigingsnieuws” starts with looking back on the 65th anniversary celebration they had. They also announced a whole new series of philatelic books being published. You can see some book reviews in the upcoming magazine(s). The magazine ends with the new-found types and differences of postmarks used in the Netherlands.

## The Netherlands Philatelist

*Language: English.*

Magazine and Newsletter, each published three ti-mes a year by the Netherlands Philatelic Circle, Se-cretary, Newsletter editor, Magazine Co-ordinator: Paul McGowan, 50 Laburnum Lea, Hamilton, Lanarkshire, ML3 7LZ, United Kingdom. Mem-bership (this includes the Magazine as well as the Newsletter): £ 15,= for members in the UK and Eu-rope, £ 20,= for the rest of the World.

**Website:** <http://www.netherlandsphilatelic.org.uk/>

### March 2012

In this issue is the second chapter of Peter Poortvliet’s interesting article about a British army post office in Rotterdam in 1919.



Hans Kremer Writes in a article about his postal treasures from Maastricht in September 1944. He shows some postcards and envelopes that were returned to sender due to the broken connection between the liberated part of the Netherlands and the occupied part.

Further in the magazine Hans writes about his chance to be present to see how a Block (Route) cancel was put together.

Hans third and last contribution to this magazine's issue is a small article about a chilling reminder of the Holocaust. He writes about a change of address card send from Assen to the deportation camp Westerbork.

Rosemary Dellar writes in her, first part, article about Hollandia and its postmarks, remote location and postal history.

Alan Wishart ends this magazine with a small article devoted to Schiedam postmarks used in the 18th and 19th century.

This issue of the Netherlands Philatelist also Contains a cumulative index of articles that have appeared in the magazines between 1946 and March 2008. I find this last one very handy to use in my research of what other people wrote in my field of interest!

### **Postaumaat**

*Language: Dutch.*

This is the magazine of the society Postaumaat of the Netherlands. They study coil stamps and booklets issued worldwide. Subscription is € 25,= / yr. for members in the Netherlands and € 35,= / yr. for foreign countries. Secretary: H.A. Wolf, Anna van Burenstraat 25, 2351 RM Leiderdorp, The Netherlands. E-mail: [secretaris@postaumaat.nl](mailto:secretaris@postaumaat.nl)  
**Website:** <http://www.postaumaat.nl/>

In this issue new discoveries are mentioned of the coil stamps from the Lebeau issue 1941.

Also in this issue of the magazine the only Dutch article I could find over the forged stamps of the postal fraud case in the Netherlands.



This article was also given to the magazine Filatelie, but they didn't publish it! Thanks to the Postautomaat, a few people in the Netherlands know about how to recognize these forgeries. For the magazine Filatelie it is a big missed opportunity in my opinion!

### **Error**

In the previous magazine I gave a review of two magazine issues from the **SPP (Studiegroep Particuliere Postbezorging)**.

Unfortunately something went wrong during clarification of these two different magazines as I named both the same. The second review should be from **Issue 33-1 February 2012** and not as stated **Issue 32-3 September 2011**.

As Homer Simpson would say **“D’OH!”**

**Book Review**  
**The Mail during the Ceram Navy Civil Administration**

*"The Mail during the Ceram Navy Civil Administration 1942-1945"*, by J.R. van Nieuwkerk, published by Dai Nippon (Netherlands), 54 pages, in the English language.

Every so often a philatelist who has carried out extensive research resulting in an outstanding book, is honored with the very prestigious Costerus Medal and is invited to become a member of the Costerus Chapter, a Costerus Knight. It has become a tradition that the new Costerus Knight holds a lecture on his specialty at the annual Costerus dinner.

Rob van Nieuwkerk's masterpiece for which the Costerus Medal was awarded is "The Postal History of the Lesser Sunda Islands, Moluccas and New Guinea during the Japanese Occupation and the Immediate Aftermath 1942-1946"

I refer the reader to the Book Review in ASNP Magazine, volume 33, p.65-66. (Jan. 2009). This book is also in our library.

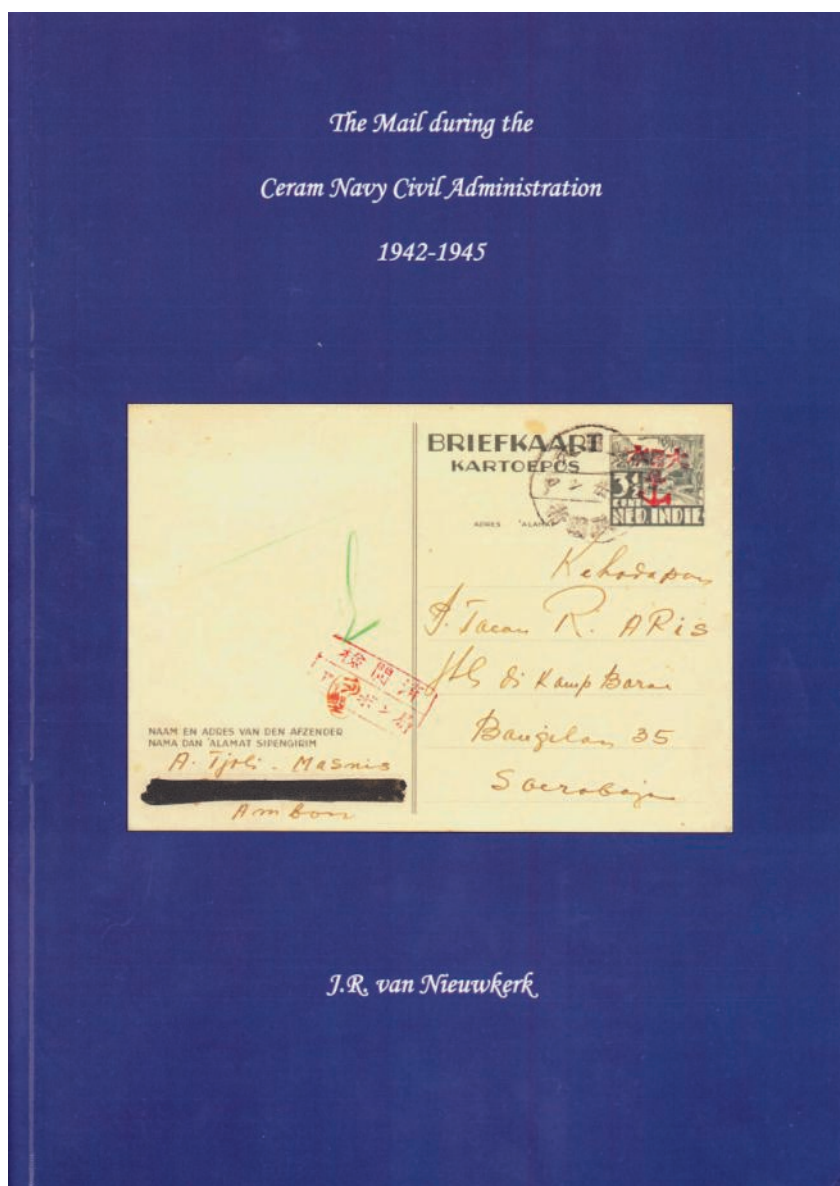
And so Mr. van Nieuwkerk was invited to hold a lecture dealing with his specialty at the annual Costerus dinner in March 2012. This lecture was so interesting that Dai Nippon decided to put it out in book form.

As member of Dai Nippon I received a copy. If you are interested in the postal history of the Japanese Occupation of the DEI, you will thoroughly enjoy reading it and admire the philatelic treasures pictured on its pages. The subject matter is rather complex and it is hard to do it justice in these few lines.

You can order a copy from Dai Nippon, via the secretary Leo Vosse at [secretary@dainippon.nl](mailto:secretary@dainippon.nl) or [leo.vosse@planet.nl](mailto:leo.vosse@planet.nl).

Cost US\$20 + mailing cost. Checks in US dollars drawn on a US bank can be sent to J.R. van Nieuwkerk,

Fluweelboomlaan 83, 1185 PP Amstelveen, Netherlands. This is the easiest form of payment.





## Recent Issues

### 125 years of the Dutch Salvation Army 27 February 2012

27 February 2012 will see the issue of a stamp sheetlet celebrating 125 Years of the Dutch branch of the Salvation Army. One of the many ways in which the Salvation Army puts its faith into practice is by providing social assistance to groups of people not properly reached by other organisations.

In addition to the stamp sheetlet featuring ten identical stamps, a stamp booklet and a first day cover will be issued.

#### The Design

The Salvation Army 2012 sheetlet contains ten identical stamps and a margin featuring different images of the organisation's work. The stamps themselves show a photo of a Salvation Army soldier who has given a bowl of soup to a homeless man, a timeless and immediately familiar image of the help the Salvation Army provides.

The sheetlet header includes the logos of the Dutch Salvation Army and PostNL, flanking the Army's anniversary slogan in Dutch: Doen wat we geloven, al 125 jaar, which translates as "We've been doing what we believe in for 125 years". The Salvation Army's logo can also be seen in many of the fourteen photos that decorate the sheet margin, showing the organisation's work. We see all kinds of relief workers and their clients, representing the many faces of the Salvation Army today. While the bowl of soup in the central photo shows just how little the organisation's main form of assistance has changed over the past 125 years, the margin illustrates the varied forms of help that have been added since the Army was established in the Netherlands in the 19th century.

#### Salvation Army

On 2 July 1865 in London, William Booth founded The Christian Revival Society, the precursor of the Salvation Army. This church and evangelical aid organisation has since spread to over 120 countries, known in the Netherlands as the Leger des Heils.

Booth's message appealed to many a Londoner in the 19th century. His East London Revival Society was soon renamed The Christian Mission; in 1868 the city was already home to thirteen Christian mission posts. People came to listen to sermons in large halls, where soup was also handed out to combat hunger, and soap to promote hygiene. In 1878, Booth gave his organisation the bold name "The Salvation Army", soon to be followed by the still familiar uniform, with two letter S's for Salvation on the collar.

The Salvation Army's first overseas post was established in New York in 1880, followed shortly after by expansion in Europe and elsewhere in the world. After countries like France (1881), India (1882) and South Africa (1882), it was the Netherlands' turn in 1887. By the time Booth died in 1912, his army had already spread to dozens of countries.



The Salvation Army's work in the Netherlands is divided into four categories:

1. Care and welfare: more than 5,000 workers provide professional help on a daily basis to people who do not have a carer;
2. Spirituality: the Army helps people within and outside the church with questions on spirituality;
3. Clothing collection: the Army reuses clothing through clothes shops and collects clothing to be sold on;
4. Development aid: regardless of belief or background, the Army helps improve the living conditions of people all over the world.

Although its ranks in the Netherlands are declining, the Salvation Army is continuing its spiritual and social assistance. It currently has over 5,200 professionals, 5,000 Salvation soldiers and thousands of volunteers in the Netherlands.

#### Technical Details

Stamp size:	36 x 25mm
Perforation:	13 ½ : 13 ½
Paper:	normal with phosphor tagging
Gum:	synthetic
Print process:	offset
Print run:	230,000 sheetlets
Printer:	Cartor Security Print, France
Stamp type:	sheetlet with 10 identical stamps
Product code:	320263
Print colors:	yellow, magenta, cyan and black



## 125 Years of Albert Heijn 27 February 2012

The Albert Heijn 2012 stamp sheetlet, to be issued on 27 February 2012, is dedicated to the 125th anniversary of the largest and best known food retailer in the Netherlands. Among the Dutch, the name Albert Heijn is more or less synonymous with grocery shopping. This leading supermarket has grown to its present stature from a local grocery store in the small town of Oostzaan, North Holland, making it the oldest still-operating grocer in the country – boasting 125 years chock full of innovative growth.

Everything the Dutch today take for granted in their supermarket, from self-service to saving-point schemes, from loyalty cards to delivery service, and from house brands to supermarket-sponsored magazines featuring recipes and shopping tips, was all originally introduced to the Dutch public by Albert Heijn. To illustrate this innovative drive, in the stamps the designer opted to use separate images and icons that, together, tell the story of how Albert Heijn has developed since it started out in 1887.

In addition to a stamp sheetlet of ten stamps with four different designs, a stamp booklet and a first day cover will be issued.

### The Design

Four different stamps are included on the Albert Heijn 2012 stamp sheetlet, with a repeating pattern printed on the reverse of the sheetlet. Each stamp features an iconic, silhouetted image printed in gold over a background photo printed in black and white, sepia tone or cyanotype (as used for blueprints). Each photo represents a particular era in the history of the supermarket chain, and the stylised images above symbolise the present, although they may still be linked to the past. The placement of the icons over the photos give the sense of a continuum between the origins of Albert Heijn and its present-day operations.

The icons have been borrowed from Albert Heijn's anniversary logo, which features even more of these icons, and the photos have been selected from the extensive photo archives of the Albert Heijn Heritage Foundation. The anniversary products that will be on sale in 2012 will feature more of these historical photos, giving the stamps a direct link-in with in-store promotional material for the anniversary celebrations.

On the top-right stamp we see the original Albert Heijn store printed over a photo of the first grocery-delivery bicycle. This photo symbolises Albert Heijn's innovation of bringing groceries to the people, first through the use of a delivery service, and eventually by opening more and more local stores. That's how this one little store grew into a major food retail chain with hundreds of stores throughout the Netherlands, now across the border as well.

The next stamp shows coffee beans floating above a photo of women working in a coffee production plant in the Dutch town of Zaandam. Coffee was one of the first products Albert Heijn started importing directly. It then roasted and packaged the coffee itself before selling the end product in its stores.

The hamster, the Dutch equivalent of the squirrel when it comes to hoarding, is the third icon that appears. A cartoon hamster features regularly in Albert Heijn ads during the supermarket's "Stock-up Weeks", and this popular character is used as the modern symbol of what was, in earlier days, a new approach to grocery shopping – self service. Albert Heijn revolutionised grocery shopping in the Netherlands by being the first to allow its customers to serve themselves, taking its inspiration from the Americans. Behind the hamster icon is a copy of a poster used to advertise Albert Heijn's introduction of this innovative concept to the Netherlands.



The last of the four stamps features the supermarket's latest-model shopping trolley being pushed by a father, illustrating how grocery shopping has evolved over the years from being considered mainly women's work to an activity for the entire family. The background photo shows a group of Albert Heijn employees in recognition of the people without whom none of this would have been possible.

An uncommon feature of this sheetlet is the reverse side, which has also been printed. A repeating image combining the old Albert Heijn logo with the new and showing the years 1887 and 2012 is printed in the same "Albert Heijn blue" as used in the photo of the employees featured on the fourth stamp.

### Technical Details

Stamp size:	30 x 40mm
Perforation:	slit
Paper:	normal with phosphor tagging
Gum:	self-adhesive
Print process:	offset
Print run:	No details given.
Printer:	Joh. Enschedé Security Print, The Netherlands
Stamp type:	sheet of ten unique stamps in four different designs
Product code:	320264



## Europa Stamps 26 March 2012

For the Europa Stamps 2012, the waterways of Amsterdam, symbolising the position and attraction of the Netherlands as a land of water, is the theme that has been selected as the interpretation of the EUROPA Stamp Best Design Competition's 2012 theme of 'Visit...'. The stamps show how Amsterdam's wealth and development as a city has been dominated by its historic concentric rings of canals and the River Amstel (featured on the Europa stamps), as well as by the River IJ and the Oosterdok docking basin (featured on the Netherlands stamps). The Visit Amsterdam and the Bezoek Amsterdam stamp sheetlet, both of which will be issued on March 26, each feature six stamps with two different designs. These bear the designations Europa 1 and Nederland 1 for mail destined for addresses in Europe and in the Netherlands respectively.

In addition to the stamp sheetlet, two stamp booklets and two first day covers will also be issued.

### The Design

On the Visit Amsterdam sheetlet, the 17th-century painting by Gerrit Berckheyde, *De bocht van de Herengracht* ("the bend in the Herengracht canal") and a photo of the Magere Brug ("skinny bridge") over the River Amstel have been used to illustrate the theme of the waterways of Amsterdam. For the Bezoek Nederland, two photos have been selected to represent this theme, one of the National Maritime Museum located at the Oosterdok docking basin, with the Dutch East Indiaman *The Amsterdam* in the foreground, and the other of the Muziekgebouw aan 't IJ concert hall with the Bimhuis jazz hall, showing the MSC Lirica cruise ship docked alongside.

The design shows, in various ways, how the city is reflected in its waterways. A strip with the words *Normaal Amsterdams Peil* (Amsterdam Ordnance Datum, or NAP) runs behind each photo. NAP is a vertical datum, or reference point, used in the Netherlands to measure water levels. A graphic representation of a water-level gauge with the characteristic NAP graduated markings is included on the stamp with the photo of the Muziekgebouw aan 't IJ concert hall; the upper edge of the strip with the words *Normaal Amsterdams Peil* aligns exactly with the 0.4 meters-below-NAP line, the target for the water level in Amsterdam. The cropping of the photos on the stamps uses roughly the same angular form as the bends seen in Amsterdam's rings of canals. This angular form continues into the margin, as do cropped sections of the photos. The font used on the stamps is ITC Avant Garde Gothic. The accompanying text on the Bezoek Amsterdam sheetlet is in Dutch, and some text on the Visit Amsterdam sheetlet is in English. The classic Dutch song *Aan de Amsterdamse grachten*, celebrating the canals of Amsterdam, plays when the sheetlet is scanned with a mobile phone.



### Technical Details

Stamp size:	36 x 25mm
Perforation:	13 ½ : 13 ½
Paper:	normal with phosphor tagging
Gum:	synthetic
Print process:	offset
Print run:	Bezoek Amsterdam: 360,000 sheetlets Visit Amsterdam: 330,000 sheetlets
Printer:	Cartor Security Print, France
Type of stamp:	two sheetlets each featuring six stamps with two different designs
Print colors:	yellow, magenta, cyan, black and gold

## Now That Deserves a Card!

26 March 2012

Retailers in the Netherlands will be marking 26 March to 16 April 2012 on their calendars: that's when the Stamp Giveaway promotional campaign will be held this year. Customers purchasing at least six euros worth of greetings cards from one of the thousands of participating sales points during these three weeks will receive a free sheetlet with three special stamps. The design of the "For you, from me" stamp sheetlet was created by graphic designer and illustrator Marenthe Otten.

PostNL has teamed up with Stichting Wenskaart Nederland (Dutch Greetings Card Foundation), the initiator of this promotion, to encourage personal contact through written greetings cards. The Stamp Giveaway in-store promotion is part of the Now that deserves a card! campaign.

In addition to the stamp sheetlet featuring three different stamps, a stamp booklet and a first day cover will be issued.



### The Design

Each sheetlet contains three identical stamps with the non-value indicator 1 and the designation Nederland 2012. The individual stamps feature the stylised image of a carrier pigeon surrounded by iconic flowers and other parts of plants, all in pink, yellow and black. These light-hearted images also appear in the sheet margin. In the margin above the three stamps we see the campaign slogan: Voor jou, van mij... (For you, from me).

### Technical Details

The part of this slogan, "Voor jou", also appears on the stamp, in a text balloon in the form of a cloud. The running slogan "Now that deserves a card" appears as a note attached to the sheetlet with an arrow pointing to the words "For you, from me...".

The Feel Script font has been used for the slogan and Nobel has been selected for the number 1 and Nederland 2012. The sheetlet will display a special QR code that will allow smartphone users to download an app from Stichting Wenskaart Nederland with all sorts of background information on the campaign and on writing cards.

Stamp size:	36 x 25mm
Perforation:	13 ¼ : 13 ¾
Paper:	normal with phosphor tagging
Gum:	synthetic
Print process:	offset
Print run:	No details given.
Printer:	Cartor Security Print, France
Type of stamp:	sheetlet with three identical stamps given for free with the purchase of at least three greetings cards (with a total value of at least EUR 6)
Print colors:	yellow, magenta, cyan and black



## **Netherlands Open Air Museum**

### **23 April 2012**

The stamp sheetlet 100 Years of the Netherlands Open Air Museum, which will be issued on 23 April 2012, celebrates the centenary of this unique museum and pays homage to everyday life through fifteen photos. The Netherlands Open Air Museum was established in 1912 with the aim of preserving the wealth of Dutch traditions and regional diversity for generations to come. In and around authentic heritage buildings spread throughout the park, the museum brings the culture of daily living to life.

In addition to the stamp sheetlet featuring ten different stamps, two stamp booklets, two first day covers, a prestige booklet and a theme book will also be issued.

### **The Design**

The sheetlet 100 Years of the Netherlands Open Air Museum features ten different stamps, each with the designation Nederland 1. Three photos are presented on each of the five horizontal strips featuring two different stamps. The photo to the left is aligned perfectly with the perforation, the second photo flows over from the left stamp to the right, and the final photo in the row is positioned partly on the second stamp, running over into the sheet margin. The left sheet margin tells what the photos are about and who took them.

The photos depict fifteen views of daily life in the 20th and 21st century: women in front of a sod hut (photo taken by Tonnis Post in 1907), four photos taken by A.G. van Agtmaal between 1920 and 1940 (a hay cart, children at play, women cleaning, and a market square), skating at the Netherlands Open Air Museum (1949), Schiphol Airport (ca 1960), children watching television (ca 1960), children crossing the street (ca 1960), a woman sewing (ca 1960), roadside day-campers (1965: Joop Kooistra), migrant worker housing (1975: Koen Wessing), filling station at Hazeldonk (1985: René de Wit), children with smartphone (2010: Sabine Joosten), and children with a tablet at the campground (2011: C. Barton van Flymen).

The fifteen monochrome photos have been printed in five different colors, with three photos in each of the following: black & white, red & white, green & white, blue & white and purple & white. The position of the text and the non-value indicator on the stamps alternate between left and right on alternative rows. “100 years of the Netherlands Open Air Museum” followed by “100 years of paying homage to daily life” is printed in Dutch across the top of the sheetlet. The logos of PostNL and the Netherlands Open Air Museum are shown at the bottom of the sheetlet.

### **The Netherlands Open Air Museum**

The Netherlands Open Air Museum (Nederlands Openluchtmuseum) is a national heritage museum featuring the culture of the daily life of the common people in the Netherlands. At this park, history comes to life in and around authentic heritage buildings. Through these buildings and interactive presentations, the museum gives its visitors the opportunity to see, first hand, how the average Dutch citizen carried out his or her daily activities in previous centuries. Brought in from all corners of the Netherlands, the historical park features homes, farms, small businesses, windmills and much more, all equipped with working antiques and original artefacts and furnishings. Museum staff, convincingly playing the part of the original inhabitants and tradesmen and women, demonstrate their skills and tell all about their life and work. Special activities are organised for children and their parents at the weekend and during school holidays.

Established on 24 April 1912, the museum opened its gates in 1918. The historical park, built on the former De Waterberg estate near Arnhem, opened with just six buildings transported from other parts of the country; this has since grown to ninety heritage buildings. The historical park covers 44 hectares and the museum collection comprises some 170,000 antiques and original artefacts, from farm-carts and soft furnishings to regional costumes and toys. Thanks to its innovative character, in May 2005 the Netherlands Open Air Museum won the European Museum of the Year Award, and in 2009 the BankGiro Lottery Museum Prize.

“The Netherlands Open Air Museum will be celebrating its centenary in appropriate style,” says Pien Rommens, head of Marketing & Communication for the museum park.

“Visitors will be able to take a specially laid-out anniversary tour of the park, which will highlight the most notable moments in its history. They can learn, for example, how the historical park offered accommodation to six hundred evacuees during WWII, and what caused the Twente-region farm to burn down during the opening in 1918. Old film footage will also be shown. At the weekend and during school holidays there will be a stage featuring amateur societies singing in celebration of this special event. We’re doing all of this to let our visitors see and enjoy what the museum has accomplished over the last century, and what it will continue to do for future generations.”

The centennial celebrations kick off on 3 April with the opening of the new living exhibit of daily life in the Jordaan district of Amsterdam. Pien Rommens: “On the one hand, we are looking back in time and, on the other hand, we are looking towards the future of the museum, giving daily life in the city a place as well. And we will, of course, be getting our visitors directly involved in the celebrations. Actually, we’re taking that even further: we’re asking everyone in the Netherlands to think of objects that are currently so important in their daily life that they should be preserved for future generations, and to suggest these to us online. The ten most popular items and the stories of the users will be given a place in our museum.”



## Technical Details

Stamp size:	36 x 25mm
Perforation :	14 ½ : 14 ½
Paper:	normal with phosphor tagging
Gum:	synthetic
Print proces:	offset
Print run:	240,000 sheetlets
Printer:	Joh. Enschedé Security Print, The Netherlands
Type of stamp:	sheetlet with 10 different stamps
Print color:	yellow, red, blue, purple and black
Product code:	320561



## AMERICAN SOCIETY for NETHERLANDS PHILATELY

We are happy to introduce to you the **American Society for Netherlands Philately** (ASNP), affiliate # 60 of the American Philately Society. Membership in the Society will give you the following benefits:

An illustrated **MAGAZINE** ( containing philatelic articles as well as news items), published six times a year access to the ASNP **LIBRARY** through borrowing privileges, and an **AUCTION**. This is the only auction in the USA that deals exclusively with Netherlands and Related Areas material.

Membership runs from September 1 through August 31. We offer two ways to receive our magazine. Digital in PDF format by email and in hardcopy sent by snailmail. Tab one of the boxes below to make your choice.

- ☐ **Digital magazine** sent by email (provide your email address!), dues are for members worldwide \$ 10,=
- ☐ **Hardcopy magazine** sent by snailmail, dues are \$ 20 per year for members living in the USA, \$ 25 for Canada, and \$ 30 for the rest of the world. You have the option of a six-months membership if you apply between March 1 and August 31 for one half of the above rates ( \$ 10, \$ 12.50, \$ 15).  
Your full membership will then start as following September 1.
- ☐ **Digital and hardcopy**, dues are the same as mentioned for the hardcopy version.

As soon as we receive your completed application, with payment of dues in US dollars, you will be eligible to vote in our annual elections, and, most importantly, we will send all current issues due of the Magazine. Yes, I want to join the **AMERICAN SOCIETY for NETHERLANDS PHILATELY**.

<input type="checkbox"/> Mr.	<b>Last Name:</b> _____
<input type="checkbox"/> Mrs.	
<input type="checkbox"/> Miss.	<b>First Name:</b> _____
<input type="checkbox"/> Ms.	
<input type="checkbox"/> Dr.	<b>Email:</b> _____
<input type="checkbox"/> Rev.	
	<b>Adres:</b> _____
	_____
	_____
	_____

- |   |   |  |
|---|---|--|
| <input type="checkbox"/> Netherlands              | <input type="checkbox"/> Plate faults             | <input type="checkbox"/> Perfins or POKOs              |
| <input type="checkbox"/> Netherlands Antilles     | <input type="checkbox"/> Printing errors          | <input type="checkbox"/> Rep. of Indonesia             |
| <input type="checkbox"/> Netherlands Indies       | <input type="checkbox"/> Color variations         | <input type="checkbox"/> Rep. of Surinam               |
| <input type="checkbox"/> Netherlands New Guinea   | <input type="checkbox"/> Stationery and covers    | <input type="checkbox"/> Fieldpost                     |
| <input type="checkbox"/> Surinam                  | <input type="checkbox"/> Revenues and railroads   | <input type="checkbox"/> EO-Philately                  |
| <input type="checkbox"/> Japanese Occupation N.I. | <input type="checkbox"/> Booklets or combinations | <input type="checkbox"/> Localmail                     |
| <input type="checkbox"/> UNTEA                    | <input type="checkbox"/> Coils                    | <input type="checkbox"/> Other (please specify): _____ |
| <input type="checkbox"/> FDCs                     | <input type="checkbox"/> Cancellations            | _____  |
| <input type="checkbox"/> Perforation varieties    | <input type="checkbox"/> Salvage information      | _____  |
| <input type="checkbox"/> Proofs & Essays          | <input type="checkbox"/> Franking labels          | _____  |

**Please mail your application with payment, payable to ASNP, in U.S. dollars to:**

**Jan Enthoven, 221 Coachlite Ct. S., Onalaska, WI 54650 – 8710, U.S.A.**

**Email Contact: [jenthoven@centurytel.net](mailto:jenthoven@centurytel.net)**



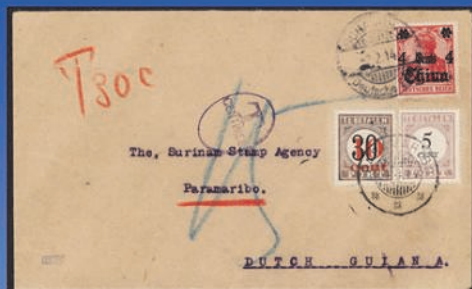
# VAN DIETEN POSTZEGELVEILINGEN



1886

## Van Dieten Postzegelveilingen en Van Lokven Filatelie

organiseren veiling nr. 621/69 op 8 en 9 april  
te Roermond



uit collectie V.H.C.J. Thael's



P.15-III+II+I+15fd



28 \*\*



SP 178-201 \*\*



PB 8

In deze veiling komen onder meer onder de hamer:

- Intact gelaten collecties en mooie samenstellingen in dozen, albums, insteekboeken en enveloppen
- Mooi aanbod Nederland
- Het eerste gedeelte van de indrukwekkende collectie Surinaamse Kroontjes-porten van wijlen de heer V.H.C.J. Thael's
- Bijzonder aanbod buitenland, vooral Frankrijk en postfris België en Duitse Rijk
- Uitgebreid postgeschiedenis Nederland en Overzeese Rijksdelen



**VAN LOKVEN FILATELIE BV**



**Van Dieten en Van Lokven Postzegelveilingen**

Kantoor en Kijkdagen:

Bakkerstraat 22, 6041 JR Roermond

T: +31 (0)475 - 563 500 • F: +31(0)475 330 829 • [info@vandieten.nl](mailto:info@vandieten.nl) • [www.vandieten.nl](http://www.vandieten.nl)

Organisatie: Henk van Lokven en Peter Storm van Leeuwen



[www.vandieten.nl](http://www.vandieten.nl) [www.vanlokven.nl](http://www.vanlokven.nl) [www.vandieten.nl](http://www.vandieten.nl) [www.vanlokven.nl](http://www.vanlokven.nl)