

Dated Journal

Netherlands Philately  
1308 Pin Oak Drive  
Dickinson, TX 77539-3400  
USA

# Netherlands Philately

*Magazine of the American Society for Netherlands Philately*

Volume 39/4



American Society for Netherlands Philately  
Founded in 1975





# De Nederlandsche Postzegelveiling

postzegels  
verzamelingen  
poststukken



**OVERWEEGT U  
UW VERZAMELING  
TE VERKOPEN?**

Bij ons heeft u 2 mogelijkheden:

**Contante betaling**

of realisatie via onze

**Internationale  
veilingen**

Bel ons voor een vertrouwelijk  
en gratis advies.

Tel. 0294 - 43 30 20

Fax. 0294 - 43 30 55



De Nederlandsche Postzegelveiling

Leeuvenveldseweg 14 - 1382 LX Weesp

tel. 0294 - 43 30 20 fax 0294 - 43 30 55

internet: [www.npv.nl](http://www.npv.nl)

Beëdigd Makelaars en Taxateurs



# NETHERLANDS PHILATELY

Magazine of the American Society for  
Netherlands Philately; **Volume 39/4**

May 2015

Editor's message,

Magazine 39-4 is in front of you and it contains some interesting articles. Our member Saburo Masuyama continues with his collection of censorship marks used in the Netherlands East Indies 1939-1942. Hans Kremer writes about some interesting airmail rates of 1941 and your editor wrote a small article about an interesting postcard he came across. The magazine finishes with some recent issues of the Netherlands.

What else is new in our society. I bought a house this month and it is in need of some serious attention, i.e., a "smashing party" involving the use of a sledge hammer is needed. Basically I will be busy for the next two months, but not full time with philately.

Further the webmasters have made some progress with the development of the new website and hope to roll it out as soon as possible. However there are still some technical issues to be solved and the webmasters do both have full-time jobs.

Also the results from the exhibit in Sydney are back. Unfortunately I haven't been able to qualify for the exhibit in New York 2016. A pity, but that is life. Maybe next time more luck. The collection will be online for the members in the future as reference.

The only thing that needs to be mentioned is the special 40th anniversary edition that is due in a few months. I have already received some articles from our regular contributors, but I would like to see members who haven't written before. A one page article is enough. It can be about anything you collect, a special favorite stamp issue or what attracts you in Netherlands philately.

All the best from Adelaide and enjoy your magazine,  
Alex

## Table of Contents

Editor's Page	73
The board and messages of the board	74
The Netherlands East Indies 1939-1942 part III, censorship in Surabaya	76
Airmail surcharges (1941) to Non-European countries	92
A reply card from Belgium	94
Recent issues	95

**Website:** [www.asnp1975.com](http://www.asnp1975.com)

ASNP is founded in 1975 by  
Paul van Reyen

**Netherlands Philately** is  
published 6x per year by  
the American Society for  
Netherlands Philately

©Copyright 2013, the American Society  
for Netherlands Philately (opinions ex-  
pressed in the various articles in the Maga-  
zine are those of the authors and not neces-  
sarily endorsed by ASNP or this Magazine)

ASNP is affiliate No. 60 of  
APS Advertising rates per  
issue are:  
\$50 for a full page,  
\$30 half page and  
\$20 for a quarter page.

## **The Board & Messages of the board**

### **President**

Ed Matthews  
406 Yale Crescent  
Oakville, Ontario  
Canada L6L 3L5  
yehudamatt@cogeco.ca

### **Vice President**

Franklin Ennik  
3168 Tice Creek Drive #3  
Walnut Creek, CA 94595  
ennik123@att.net

### **Treasurer**

Hans Kremer  
50 Rockport Ct.  
Danville, CA 94526, U.S.A.  
hkremer@usa.net

### **Secretary**

Ben Jansen  
1308 Pin Oak Drive  
Dickinson, TX 77539-3400  
USA

### **Auction Manager**

Hans Moesbergen  
12739 W. Wilshire Drive  
Avondale, AZ 85392-6563  
hans@moesbergen.net

### **Advertising Manager**

Meindert Mossel  
Lijsterlaan 21  
1971 KT Ijmuiden  
The Netherlands  
Mgry21@planet.nl

### **Librarian**

Paul Swierstra  
199 Chestnut Street  
San Carlos, CA 94070-2112  
paulhoxwier@yahoo.com

### **Board of Governors**

Jan Enthoven  
Onalaska, WI  
jenthoven@centurytel.net

John Hornbeck  
Washington D.C.

Benjamin Bump  
Hampden, MA

### **Webmasters**

Alex Nuijten  
asnpmagazine@gmail.com

Arno Kolster  
akolster@mindspring.com

### **Magazine Editor**

Alex Nuijten  
P.O. Box 128  
Collinswood  
South Australia 5081  
Australia

asnpmagazine@gmail.com

### **Magazine Editorial Committee**

Tony Schrier  
tonasnp@aol.com

### **Magazine Publisher**

Ben H. Jansen  
bjansen@uh.edu

### **British Representative**

Richard Wheatley

### **Dutch Representative**

**Vacancy**

### **German Representative**

**Vacancy**

## **Magazine Notes**

Our Magazine is the business card of our society. With modern technology available, a full color magazine is warranted.

Potential authors are asked to send in full color scans (at 600 dpi) of their illustrations. I would like to receive the text in MS Word. Keep in mind that you clearly state where each illustration belongs in the article.

Contact the Magazine editor in case of questions.

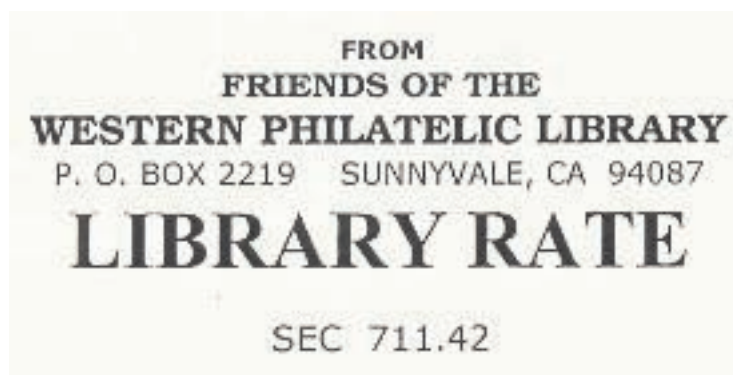
## ASNP Library Update

With the health issues of our librarian, Paul Swierstra, it was necessary to move the contents of the ASNP library from his house to space generously provided by the Western Philatelic Library (<http://www.fwpl.org/>) in Redwood City, California.

During the transition, additional philatelic material was located that would be of interest to the ASNP members. The spreadsheets (sorted by number, title, and author respectively) containing the library contents have been updated and uploaded to the ASNP Website (<http://asnpl975.com/>). The library now contains close to 650 items, so there is undoubtedly something of interest for each ASNP member.

Based on my experience, the most convenient way to look at the contents is to look at the spreadsheet sorted by title. Once the spreadsheet shows on your screen you might want to print it off for future reference.

If you have a question for the librarian you should contact Paul ([paulhoxwier@yahoo.com](mailto:paulhoxwier@yahoo.com)). When ordering an item from the library it would be best to contact the Western Philatelic Library directly ([info@fwpl.org](mailto:info@fwpl.org)). The WPL qualifies for the low library mail rate, and this even applies when returning an item to the WPL. All you have to do is change the word "FROM" to "TO" on the label shown below.



Library rate (which is valid in the U.S only) is \$ 1.71 for the first pound and only 32 cents per pound more thereafter.

Have a look at the library, you might be surprised to see how extensive its holdings are., and take advantage of it.

Hans Kremer

## Membership News

We welcome Michael O'Hagan of Victoria B.C., Canada as a new member. His collecting interests are Netherlands, Japanese Occupation N.I., FDCs, Color variations, and Stationery and covers.

At present, we have 108 members, 50 of whom receive the Magazine exclusively by e-mail, and 87 receive both versions. Given that the electronic version is in full-color, and that the membership fee is half the rate for a black-and-white hardcopy, I encourage all our members to switch to digital.

Ben Jansen

## The Netherlands East Indies 1939-1942 Part III,

### *Censorship in Surabaya*

*by Saburo Masuyama*

Surabaya was the second largest city in the Netherlands Indies and there were modern port facilities and a navy base. Here, letters from east Java, Borneo, Celebes, Lesser Sunda and islands of the east were censored from May 1940. Batavia used only the brown resealing label till August, however Surabaya did use five kinds of original resealing labels. This time, I would like to show early interesting Surabaya resealing labels and censor marks.

#### 1 DOOR CENSUUR GEOPEND, with period



Fig. 45. Surabaya May 22, 1940 with a shiny white paper "DOOR CENSUUR GEOPEND." resealing label with period mark to England by KLM. This label was used only in May 1940.





Fig. 46. Proboringo May 25, 1940 via Surabaya and Victoria (May 30) with triangular "PASSED CENSOR HONG KONG 4" marker in green to San Francisco by PANAM.



Fig. 47. Surabaya May 29, 1940 to Hong Kong "PASSED CENSOR HONG KONG 9".



2 DOOR CENSUUR GEOPEND, two lines



Fig. 48. This cover was posted in Makassar May 29, 1940. In Surabaya, a new shiny white paper label "DOOR CENSUUR/GEOPEND" was applied. June 3 KLM carried to Singapore and applied the "L" in circle, "30" in circle and triangular censor mark.

However, on June 10, Italy entered the war, and the next KLM flight was stopped at Medan. Returned to Batavia, "RETOUR AFZENDER VERBINDING PER KLM VERBROKEN" (return to sender. The KLM connection broken) marker was applied. July 12, the sender added the 1 GLD stamp, directed it to the IA/BOAC service, scratched out the "Return" marker with red and re-posted. In Batavia, "CENSUUR GEPASSEERD 6" was applied, however it was not opened.

*This label was only used in May and June 1940.*





Fig. 49. Lawang May 29, 1940. Surabaya white label "DOOR CENSUUR / GEOPEND". In Calcutta, June 8, a new brown "OPENED BY CENSOR" was placed over the white label before it arrived at Lahore on June 10.



Fig. 50. Surabaya June 1, 1940 to Auckland New Zealand by the KNILM and TEAL airlines.

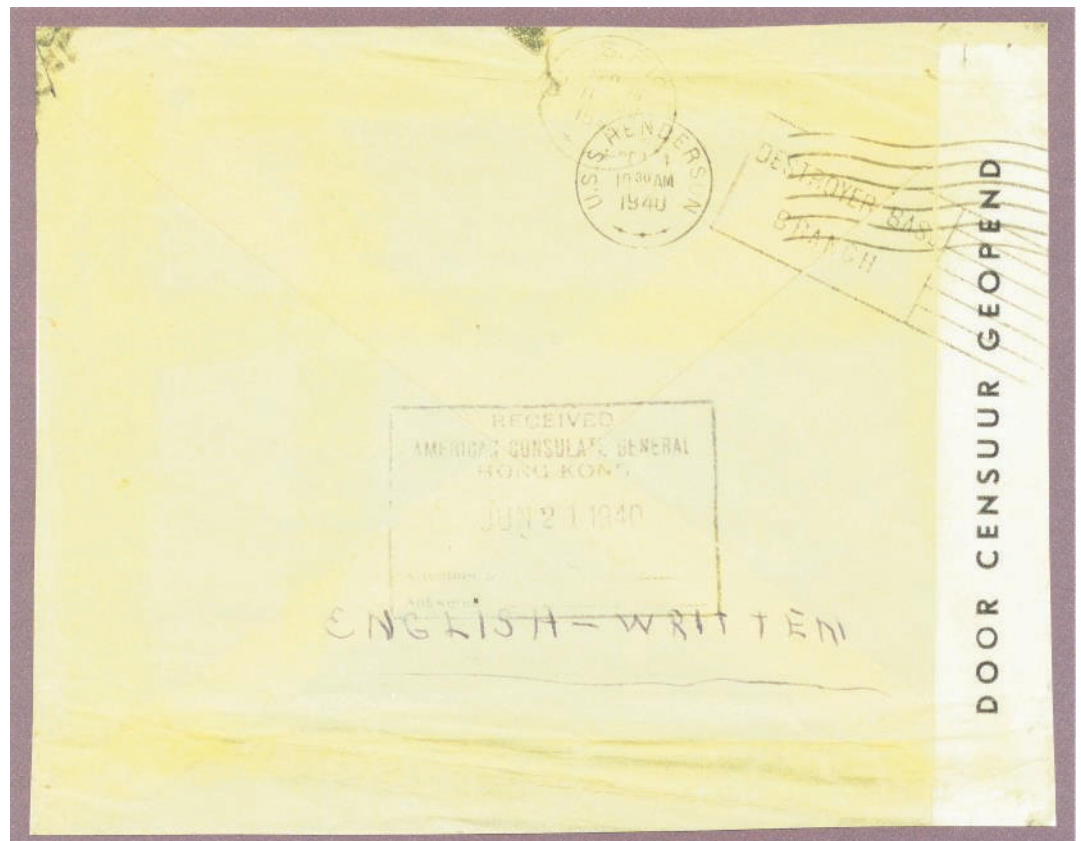


### 3 DOOR CENSUUR GEOPEND, single line



Fig. 51.

Surabaya June 7, 1940. This letter was opened and re-sealed with a new type white label and sent to a sailor of the American destroyer Alden in Hong Kong. June 21, Hong Kong post office passed it on to the American Consulate General. September 4, the letter was transferred to U.S.S. Henderson in San Francisco. However, the stamp "TRANSFERRED TO RECEIVING SHIP SAN DIEGO CALIF" was added and the cover was resent to U.S.S. Ridge. September 16, the recipient was discharged from military service, it was sent to his home address.





**GECENSUREERD**  
**12**



Fig. 52. July 3, 1940. The Navy post office postmark Soerabaja-Oedjong and "GECENSUREERD 12" were applied and tied the same day as the postmark of the Surabaya post office. However 2 cent short, sent via Singapore "PASSED BY 1 CENSOR" to San Pedro, California. The first Surabaya censor marks "GECENSUREERD 3" and "GECENSUREERD 6" were reported, see figures 17 – 19 on pages 98 and 99 of *Netherlands Philately* # 38-3. This is the third censorship mark that was used only at the Navy post office.



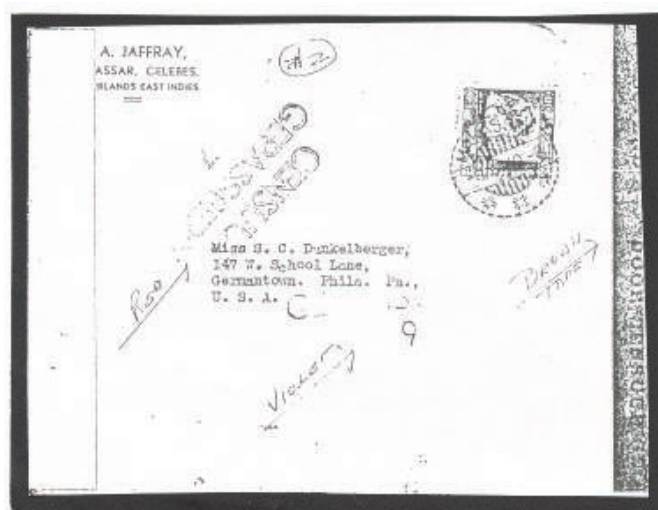


Fig. 53. August 7, 1940. The Navy post office postmark of Soerabaja-Oedjong and "MARINE - CENSUUR E" were applied. The same day, Surabaya post office tied the postmark. A similar letter to the same address with "GECENSUREERD 12", the Navy post office July 11 and Surabaya post office July 12 is shown in the commemorative ZWP book on page 94. (<http://www.studiegroep-zwp.nl/>) This framed "GECENSUREERD 12" was used as the naval censor mark with the Navy post office mark in June and July. "MARINE - CENSUUR E" was applied from August 1940 until 1942.

## 6 PLAIN WHITE PAPER



Fig. 54. Surabaya June 13, 1940. In Batavia a brown label was placed over a white label.



The first use of this label was reported in CCNG Bulletin, Vol. 12 June 1985, by Mr. Dann Mayo.

Makassar June 8, 1940 white and brown resealing labels "CENSUUR GEPASSEERD 7" in red and "GECENSUREERD 9" in violet. It was used at the same time as mine.

There is another example Surabaya Sep. 27, 1940 with "GECENSUREERD 23" in the commemorative ZWP book, page 80.

**More information would be welcome.**





VOORHEEN  
POSTZEGELVEILING  
WIGGERS DE VRIES BV

# CORINPHILA

- \* VEILINGEN IN NEDERLAND SINDS 1974  
EN IN ZWITSERLAND SINDS 1926
- \* GEVARIEERD AANBOD VAN BETERE ZEGELS,  
POSTSTUKKEN, COLLECTIES EN ENGROSPOSTEN
- \* TEVENS PRENTBRIEFKAARTEN, MUNTEN  
EN PAPIERGELD
- \* HÉT ADRES VOOR INTERNATIONALE VERKOOP



CORINPHILA  
VEILINGEN BV  
HEEMRAADSLAAN 100  
1181 VC AMSTELVEEN  
NEDERLAND

TEL. +31 - (0)20 - 624 97 40

FAX +31 - (0)20 - 624 97 49

INFO@CORINPHILA.NL

WWW.CORINPHILA.NL

G.J. GARRITSEN REGISTERTAXATEUR FEDERATIE TMV

VEILINGCATALOGI DIGITAAL VIA ONZE WEBSITE,  
OP AANVRAAG PER POST VERKRIJGBAAR

WILT U OOK INZENDEN VOOR EEN VAN ONZE  
VOLGENDE VEILINGEN ?

GAARNE GEVEN WIJ U VRIJBLIJVEND ADVIES EN  
INFORMATIE OVER ONZE VERKOOPVOORWAARDEN



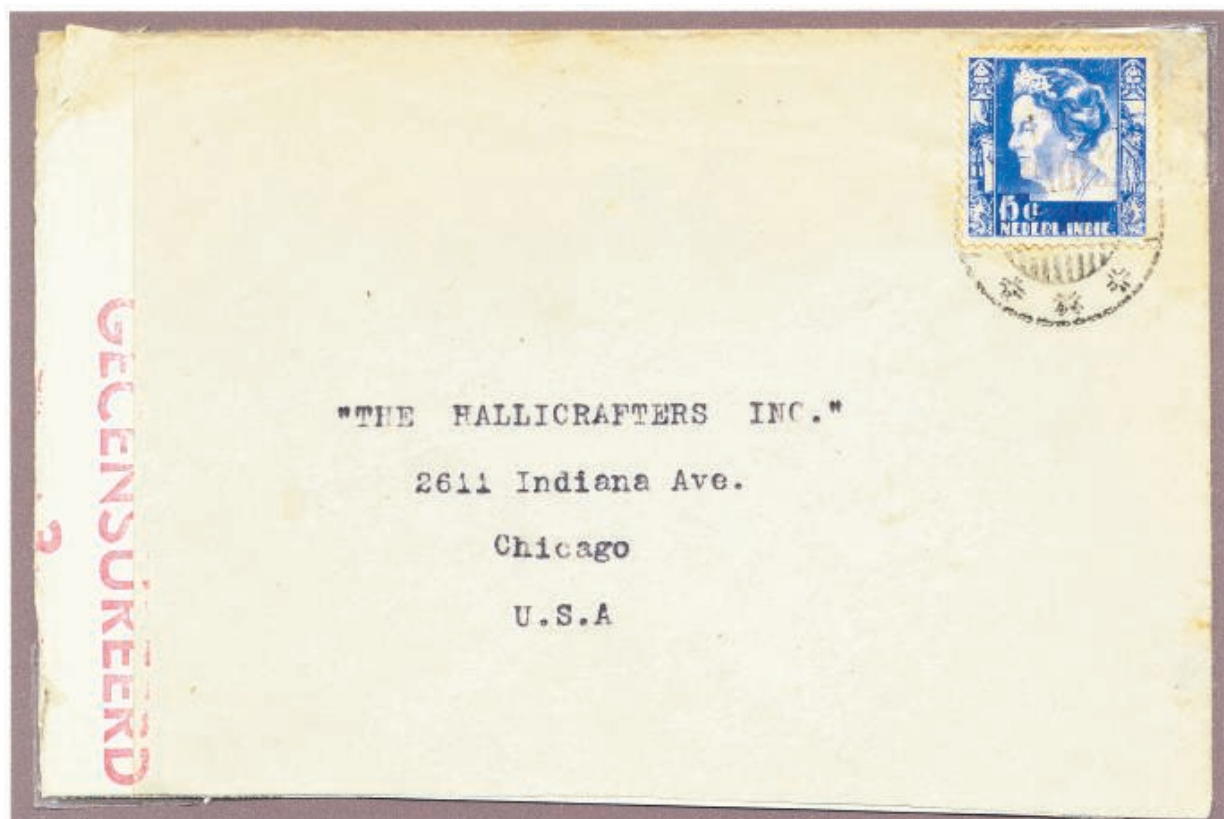


Fig. 55. Malang August 21, 1940. The white label and "GEPASSEERD 3" to Chicago by ship.



Fig. 56.

Bandoeng - Lembangweg August 30. Over the white label, a brown "CENSUR BATAVIA" and "GEPASSEERD 19" were applied at Batavia, arrived in Melbourne September 23 by ship.



7 "GECENSUREERD" without number in red 65mm



Fig. 57. Surabaya September 6, 1940 via Bagdad to Lugano, Switzerland by KLM.



Fig. 58. Bandung October 22, 1940 via Surabaya to Australia by KNILM.

8 "GECENSUREERD 22 and 23" in red 62mm



Fig. 59. Balikpapan August 30, 1940 via Surabaya "GECENSUREERD 22" to USA.

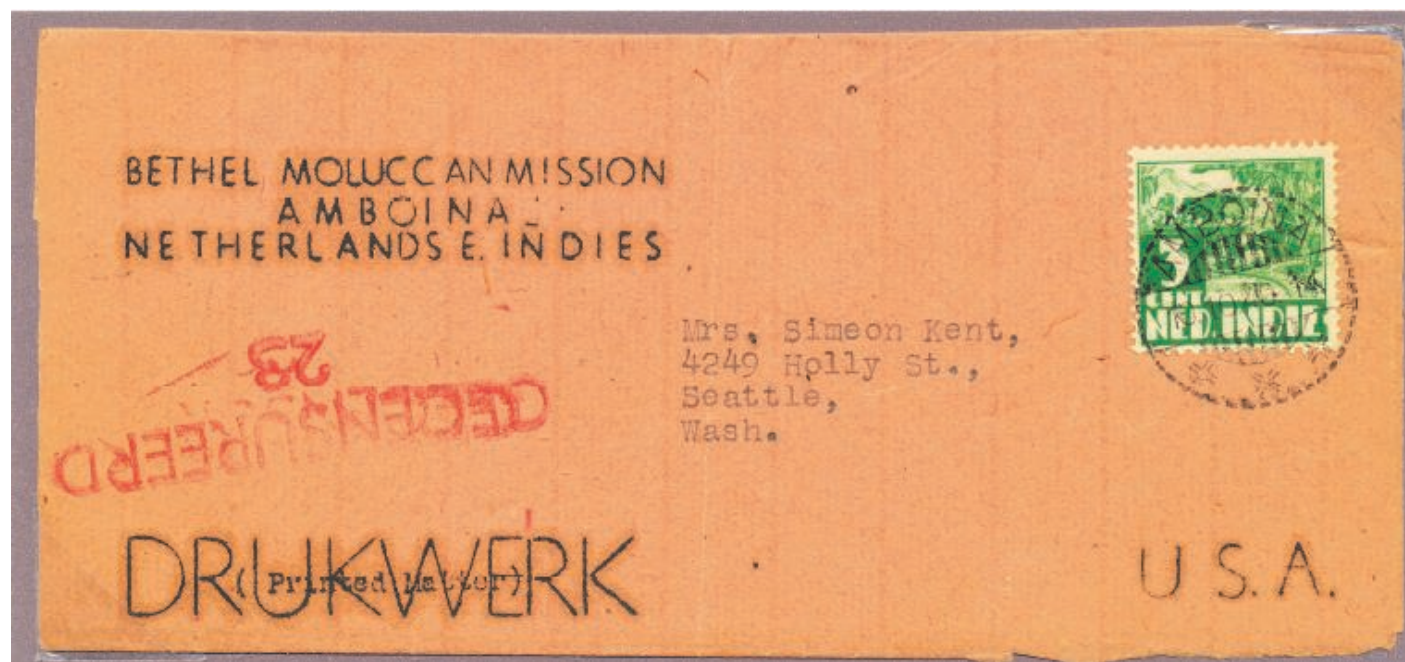


Fig. 60. Amboina October 10, 1940 via Surabaya "GECENSUREERD 23" to USA.  
Instead of "GECENSUREERD 3" and "6", "22" and "23" were applied.



## 9 Surabaya Currency institution

Surabaya Currency institution used a new censor mark “DEVIEZEN CENSUUR SOERABAJA” with the numeral 2, 3, 4, 5, or 6 and new plain resealing labels. The labels are in two colors; light green and beige, but some labels show both of these colors, suggesting that the color of the tape varied across its length.



Fig. 61. Surabaya, posted Sep. 12, 1940. However via Hong Kong to USA and Europe, the rate was 15 cent + 100 cent.

So Sep. 13 the sender added 15 cent and remailed the envelope.

“DEVIEZEN CENSUUR SOERABAJA 3” and resealing label, beige at the top and light green at the bottom were applied.





Fig. 62. Surabaya Sep. 12, 1940 "DEVIEZEN CENSUR SOERABAJA 5" to New York Oct. 28.



Fig. 63. Surabaya Sep. 19, 1940 "DEVIEZEN CENSUR SOERABAJA 4" to New York.



## The last use of the light green label



Fig. 64. New York Dec. 16, 1940, San Francisco Dec. 21 registered mail to Surabaya Feb. 7, 1941. "DEVIEZEN CENSUUR SOERABAJA 5" and light green resealing label were applied. The recipient was missing, re-censored in Batavia and sent back to New York. "FOUND IN ORDINARY MAIL" was put on in New York.

This green label was used mainly in September. The later use, I only know from Surabaya November 11 registered airmail to New York and the one shown here.

*More information would be welcome.*

## 10 The brown label, same as Batavia



Fig. 65. September 27, 1940. "DEVIEZEN CENSUUR SOERABAJA 2" to New York by ship.  
The same brown resealing label "DOOR CENSUUR GEOPENED" that was used in Batavia was used here too.

## Special edition of Netherlands Philately

In August of this year we will start on our 40th volume of Netherlands Philately as part of the societies 40th anniversary. To celebrate this the society wants to issue a special edition that reflects the diversity of members within the society.

To turn this in a success I want to ask you as members to write a minimum of one page (more pages are most welcome) about your interest in Netherlands and/or Colonies philately or a nice philatelic story about an item or items you researched. We did a great job last year with our Netherlands East Indies specials, so why not turning it into a excellent job and show the world why Netherlands and/or Colonies philately is so interesting!

**The editor already received a couple of articles. Who will follow??**

**Closing date for this issue is 31 June 2015!!**



# Airmail Surcharges (1941) to Non-European Countries

by Hans Kremer

Airmail surcharges (due to its complexity) are among the hardest pieces of information to find anywhere. When, on pages 124 and 125 of the PTT NIEUWS of 1941, I saw the list below I made a copy of it and I thought there might be others interested in it. Translated it reads:

## Non-European Airmail

The non-European countries listed below are still connected via airmail. One can send - registered mail or not- - letters, postal cards, printed matter, documents, samples and mixed shipments. The correspondence is exchanged daily between the Netherlands and Germany. Total travel time is not known. Airmail surcharges to the various countries are listed below, as well as the services which maintain the connection with these countries.

Country of destination	Surcharges on top of regular charges	Air route and notes (if required) to be put on items (see numbered notes)
Land van bestemming	Extra recht boven gewone porten en rechten	Betrokken luchtdienst en eventueel op de stukken te plaatsen opschriften (zie nootcijfers)
Angola *)	7½ cent per 20 gram	Luchtdienst Stuttgart – Lissabon <sup>1)</sup>
Argentinië	75 cent per 5 gram briefk. f 1,25; brieven f 1,25 per 5 gram; overige stukken f 1,57½ per 25 gram	Luchtdienst Lissabon – New York <sup>2)</sup> Luchtdienst Rome – Rio de Janeiro <sup>3)</sup>
Azoren	15 cent per 5 gram	Luchtdienst Lissabon – New York <sup>2)</sup>
Bolivia	Als Argentinië	Als Argentinië
Brazilië	75 cent per 5 gram briefk. f 1,05; brieven f 1,05 per 5 gram; overige stukken f 1,32½ per 25 gram	Luchtdienst Lissabon – New York <sup>2)</sup> Luchtdienst Rome – Rio de Janeiro <sup>3)</sup>
Canarische Eilanden	7½ cent per 5 gram	Luchtdienst Madrid – Las Palmas
Chili	Als Argentinië	Als Argentinië
Columbia	60 cent per 5 gram f 1,25 per 5 gram	Luchtdienst Lissabon – New York <sup>2)</sup> Luchtdienst Rome – Rio de Janeiro <sup>3)</sup>
Costa Rica	45 cent per 5 gram f 1,25 per 5 gram	Luchtdienst Lissabon – New York <sup>2)</sup> Luchtdienst Rome – Rio de Janeiro <sup>3)</sup>
Cuba	Als Costa Rica	Als Costa Rica
Dominicaansche Republiek	Als Costa Rica	Als Costa Rica
Ecuador	Als Columbia	Als Columbia
Guam (met Midway en Wake Island)	75 cent per 5 gram	Luchtdienst Lissabon – New York <sup>2)</sup> <sup>4)</sup>
Guatemala	Als Costa Rica	Als Costa Rica
Haiti	Als Costa Rica	Als Costa Rica
Hawai	50 cent per 5 gram	Luchtdienst Lissabon – New York <sup>2)</sup> <sup>4)</sup>
Honduras (Republiek)	Als Costa Rica	Als Costa Rica

Land van bestemming	Extra recht boven gewone porten en rechten	Betrokken luchtdienst en eventueel op de stukken te plaatsen opschriften (zie nootcijfers)
Kaap Verdische Eilanden	briefk. 22½ cent; brieven 22½ cent per 5 gram; overige stukken 30 cent per 25 gram	Luchtdienst Rome – Rio de Janeiro <sup>3)</sup>
Libië	5 cent per 5 gram	Luchtdienst Rome – Bengasi
Marokko (Spaansche zône)	5 cent per 5 gram	Luchtdienst Madrid – Tetuan
Mexico	45 cent per 5 gram	Luchtdienst Lissabon – New York <sup>2)</sup>
Mozambique *)	7½ cent per 20 gram	Luchtdienst Stuttgart – Lissabon <sup>1)</sup>
Nicaragua	Als Costa Rica	Als Costa Rica
Panama (Kanaalzône en Republiek)	Als Costa Rica	Als Costa Rica
Paraguay	Als Argentinië	Als Argentinië
Peru	60 cent per 5 gram briefk. f 1,25; brieven f 1,25 per 5 gram; overige stukken f 1,57½ per 25 gram	Luchtdienst Lissabon – New York <sup>2)</sup> Luchtdienst Rome – Rio de Janeiro <sup>3)</sup>
Philippijnsche Statenbond	85 cent per 5 gram	Luchtdienst Lissabon – New York <sup>2)</sup> <sup>4)</sup>
Porto Rico	Als Costa Rica	Als Costa Rica
Portugeesch Guinea *)	7½ cent per 20 gram	Luchtdienst Stuttgart – Lissabon <sup>1)</sup>
Rio de Oro	briefk. 12½ cent; brieven 12½ cent per 5 gram; overige stukken 15 cent per 25 gram	Luchtdienst Rome – Rio de Janeiro <sup>3)</sup>
Salvador	Als Costa Rica	Als Costa Rica
Uruguay	Als Argentinië	Als Argentinië
Venezuela	Als Columbia	Als Columbia
Vereenigde Staten van Amerika	32½ cent per 5 gram	Luchtdienst Lissabon – New York <sup>2)</sup>
Virginische Eilanden (alleen de eilanden St. Cruz, St. John en St. Thomas)	Als Costa Rica	Als Costa Rica
*) Tot Lissabon door de lucht; verder per boot. <sup>1)</sup> Op stuk vermelden: Per luchtpost tot Lissabon. <sup>2)</sup> Op stuk vermelden: Per Transatlantischen luchtdienst Lissabon – New York. <sup>3)</sup> Op stuk vermelden: Per Italiaanschen luchtdienst. <sup>4)</sup> Bovendien op stuk vermelden: Via United States Air Mail Service and Trans Pacific Route.		

- \*) To Lisbon by air; from there by ship
- 1) Add Note: Per Luchtdienst tot Lissabon
- 2) Add Note: Per Transatlantischen Luchtdienst Lissabon- New York
- 3) Add Note: Per Italiaansche Luchtdienst
- 4) Also make note on item: Via United States Air Mail Service and Trans Pacific Route”

briefk. = postal card, brieven= letters, overige stukken = other items, Als = Same as

I recommend that you print this off; it is easier to read and you don't have to remember where to find it later.



## A Reply Card from Belgium

by Alex Nuijten

On 4 August 1914 Belgium was invaded by Germany after it declined earlier to let the German troops pass through Belgium territory for their attack on France. By November 1914 most of Belgium was under German control. On 26 August 1914 the Imperial German General Governorate of Belgium was set up and divided in three zones, each under control of a different army. The Germans tried to keep the Belgium administrative system intact as much as possible while it was managed by German officers and officials. The task proved to be too tough to keep up and the result was that the economy went backwards due to blockades, military activities and the dismantling of the Belgium industry.

For the Netherlands this development not only meant that war was on the doorstep, but also a tighter border security. The Netherlands declared its neutrality when the war broke out and it meant it had to play by the rules of such a state. Thus mail between the Netherlands and German-occupied areas (or mail that had to go through occupied areas) had to go via Germany. During the first years of the occupation of Belgium this resulted that mail went either via Aachen or Emmerich in Germany. In these cities the Germans had set up censorship offices where mail was censored. On 1 January 1917 the censorship in Aachen was closed and basically everything went via Emmerich. Delays of the mail were huge, registered or express mail usually received special treatment with regard to censorship speed. However this was not affordable for everybody, especially not for those in the war zones and economically-declined areas.

There is plenty of postal history to be found in mail that went to or from the Netherlands via Germany, including registered and express mail. However to find a combination of non-philatelic Dutch and foreign franking on one postal history item is a different story. The item depicted below is probably the only way to obtain such a item. In the UPU agreements it was arranged that internationally-sent postcards with a prepaid (attached) reply card were valid outside the country of origin. However, additional fees such as registered and express were not valid. This meant that the sender of the prepaid reply card had to pay for that additional fee.

It is not surprising that such cards from Belgium during WWI are a sought after treat by collectors. By 1917 the Belgium economy was in poor condition and the majority was relying on charities for survival.

The postcard on the right was sent back to the Netherlands from Antwerp. This makes it the more interesting. Also, because it is recorded in Belgium philately that the postmaster in Antwerp displayed mood swings in regard to mail sent to foreign destinations. Specifically, he sometimes added the normal letter rate to the registration fee. In this case only the registration fee was calculated. The fee was 25 cent throughout the whole war period.

In all an interesting piece not only for the collection, but also for an exhibit.

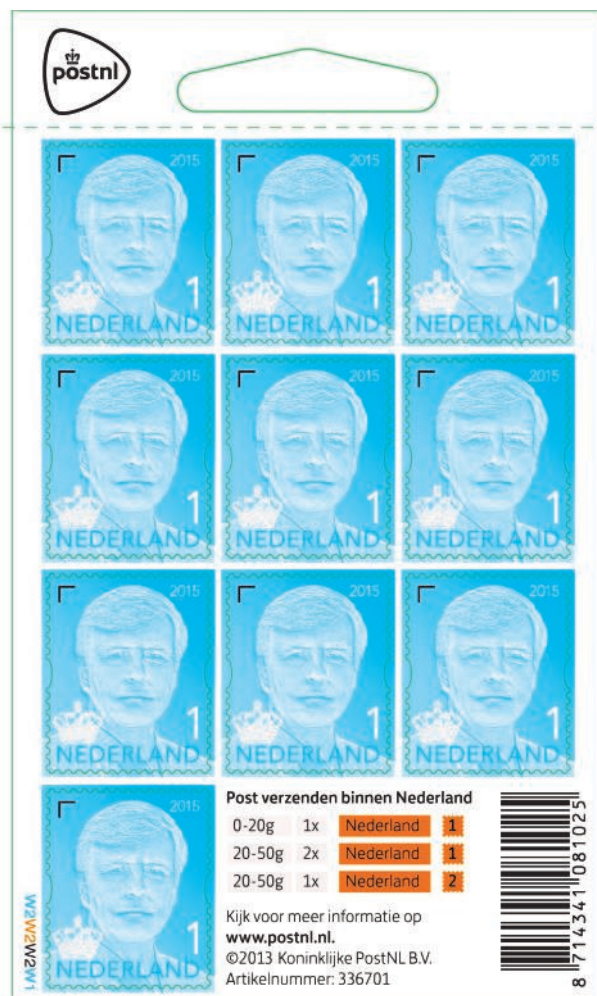


## Recent Issues

**King Willem Alexander**  
5 January 2015

Over a year ago, PostNL presented the royal stamp of His Majesty the King. The iconographic crown did not refer to the official crown. PostNL has received several responses, indicating that it would be more logical if the king stamp crown is the real crown. To this PostNL now gives ear. In issuing its stamps, PostNL has always reserved an important place for stamps of Dutch monarchs and other members of the Royal Family. Once a new head of state takes office, it is common that PostNL issues a new permanent stamp. The royal stamp was designed and adjusted by Studio Job. The adaptation of the royal stamp will go in steps. As of January 5 the king stamp with denomination 1 (for mail up to 20 grams) will be available online, and in the following weeks - depending on the stock onsite - at the neighbourhood post office. In the coming months follow the king stamps denomination 2 and international. The validity of the new and old stamp is undetermined.

*Note: the blue crown in the right picture is made blue to accentuate the difference in the stamp design. The true color is light grey.*





## 50th anniversary Top 40 5 January 2015

The stamp 50 years Top 40 focuses on the first broadcast by radio station Veronica on January 2, 1965 of the Top 40, a radio program dedicated to the 40 best-selling records in the Netherlands.

The stamps of the sheetlet are ten songs of the ten largest Dutch artists and bands of the past 50 years, two per decade:

- Golden Earring (Radar Love)
- The Cats (One Way Wind)
- André van Duin (Willem pie)
- MWN (Mon Amour)
- 2 Unlimited (No Limit)
- Paul de Leeuw (Fly With Me Mee)
- Marco Borsato (His Dreams Cheats)
- Vengaboys (We're Going To Ibiza!)
- Jan Smit (Cupid)
- Anouk (Birds).

The stamp sheetlet 50 years Top 40 is an initiative of TNT, in close cooperation with the Dutch foundation Top 40.

The 50 Years Top 40 stamp sheetlet comprises ten different stamps, each with a different and eye-catching background colour. The stamps depict hits by the two biggest Dutch artists or bands of each decade.

The illustration is a literal depiction of the most important elements from a verse in the song lyrics. These lyrics are printed on the sheet edge of the stamps. Each lyric is shown in a different font and color, which is again derived from the colors of the relevant stamp.

A gradient fill has been applied to the background color of each stamp. At the top of the stamp is Nederland 1, the year 2015 and the sorting symbol. Rita Bold has been used as the font for this. At the bottom of the stamp are the name of the artist and the reason for publication, in Univers font.



### Technical Details

Stamp size:	25 x 36 mm
Perforation:	14 ½ : 14 ½
Paper:	normal with phosphor tagging
Gum:	synthetic
Printing:	offset
Circulation:	160,000 sheetlets
Printing house:	Cartor Security Printers, France
Print colors stamp:	yellow, magenta, cyan and black

## AMERICAN SOCIETY for NETHERLANDS PHILATELY

We are happy to introduce to you the **American Society for Netherlands Philately** (ASNP), affiliate # 60 of the American Philately Society. Membership in the Society will give you the following benefits:

An illustrated **MAGAZINE** ( containing philatelic articles as well as news items), published six times a year access to the ASNP **LIBRARY** through borrowing privileges, and an **AUCTION**. This is the only auction in the USA that deals exclusively with Netherlands and Related Areas material.

Membership runs from September 1 through August 31. We offer two ways to receive our magazine. Digital in PDF format by email and in hardcopy sent by snailmail. Tab one of the boxes below to make your choice.

- ☐ **Digital magazine** sent by email (provide your email address!), dues are for members worldwide \$ 10,=
- ☐ **Hardcopy magazine** sent by snailmail, dues are \$ 20 per year for members living in the USA, \$ 25 for Canada, and \$ 30 for the rest of the world. You have the option of a six-months membership if you apply between March 1 and August 31 for one half of the above rates ( \$ 10, \$ 12.50, \$ 15).  
Your full membership will then start as following September 1.
- ☐ **Digital and hardcopy**, dues are the same as mentioned for the hardcopy version.

As soon as we receive your completed application, with payment of dues in US dollars, you will be eligible to vote in our annual elections, and, most importantly, we will send all current issues due of the Magazine. Yes, I want to join the **AMERICAN SOCIETY for NETHERLANDS PHILATELY**.

<input type="checkbox"/> Mr.	<b>Last Name:</b> _____
<input type="checkbox"/> Mrs.	
<input type="checkbox"/> Miss.	<b>First Name:</b> _____
<input type="checkbox"/> Ms.	
<input type="checkbox"/> Dr.	<b>Email:</b> _____
<input type="checkbox"/> Rev.	
	<b>Adres:</b> _____
	_____
	_____
	_____

- |   |   |  |
|---|---|--|
| <input type="checkbox"/> Netherlands              | <input type="checkbox"/> Plate faults             | <input type="checkbox"/> Perfins or POKOs              |
| <input type="checkbox"/> Netherlands Antilles     | <input type="checkbox"/> Printing errors          | <input type="checkbox"/> Rep. of Indonesia             |
| <input type="checkbox"/> Netherlands Indies       | <input type="checkbox"/> Color variations         | <input type="checkbox"/> Rep. of Surinam               |
| <input type="checkbox"/> Netherlands New Guinea   | <input type="checkbox"/> Stationery and covers    | <input type="checkbox"/> Fieldpost                     |
| <input type="checkbox"/> Surinam                  | <input type="checkbox"/> Revenues and railroads   | <input type="checkbox"/> EO-Philately                  |
| <input type="checkbox"/> Japanese Occupation N.I. | <input type="checkbox"/> Booklets or combinations | <input type="checkbox"/> Localmail                     |
| <input type="checkbox"/> UNTEA                    | <input type="checkbox"/> Coils                    | <input type="checkbox"/> Other (please specify): _____ |
| <input type="checkbox"/> FDCs                     | <input type="checkbox"/> Cancellations            | _____  |
| <input type="checkbox"/> Perforation varieties    | <input type="checkbox"/> Salvage information      | _____  |
| <input type="checkbox"/> Proofs & Essays          | <input type="checkbox"/> Franking labels          | _____  |

**Please mail your application with payment, payable to ASNP, in U.S. dollars to:**

**Ben Jansen, 1308 Pin Oak Drive, Dickinson, TX 77539-3400, U.S.A.**

**Email Contact: [bjansen@uh.edu](mailto:bjansen@uh.edu)**





# VAN DIETEN

## STAMP AUCTIONS LTD.

SINCE  
1886



WITH A RICH HISTORY OF AUCTIONS SINCE 1892

YOU WILL ALWAYS FIND IN OUR AUCTIONS A NICE VARIETY OF FINE AND EXCLUSIVE STAMPS  
AND POSTAL HISTORY OF THE NETHERLANDS AND OVERSEAS TERRITORIES

PLEASE VIEW AT [WWW.VANDIETEN.NL](http://WWW.VANDIETEN.NL) FOR OUR NEXT AUCTIONS



Cover franked with 90 cent from The Hague December 9th, 1860, to Batavia  
From the Aat de Peijper Collection (auctioned November 29th, 2013)

ARE YOU INTERESTED IN SELLING YOUR COLLECTION OR WANT AN AUCTION CATALOGUE?  
PLEASE CONTACT US



**Van Dieten Stamp Auctions Ltd.**

Head Office: Mr Henk van Lokven

Bakkerstraat 22, NL-6041 JR Roermond, Tel. +31 475 563 500

Branch Office: Peter Storm van Leeuwen

c/o Museum for Communications, Zeestraat 80-82, NL-2518 AE The Hague, Tel. +31 70 365 38 17  
[info@vandieten.nl](mailto:info@vandieten.nl) • [www.vandieten.nl](http://www.vandieten.nl)

